



Parts Manual
LK000555-LK000929

173 HL "S"



THOMAS EQUIPMENT LIABILITY WARRANTY

THOMAS EQUIPMENT LIMITED (Hereinafter referred to as the "Company") warrants each new Thomas S/S Loader sold by the Company to be free from manufacturing defects when used in normal service for a period of twelve [12] months, commencing with delivery to the original user, if operated according to manufacturer instructions and by a competent and careful operator. This warranty shall not apply to the loader or any part thereof which has been subject to misuse, negligence, alteration, or accident or which shall have been repaired outside of an authorized Thomas dealer place of business or by a authorized Thomas repairperson.

The Company's obligation under this warranty is expressly limited to the replacement or repair at Thomas Equipment Limited, Centreville, New Brunswick, or at a designated Thomas Dealer, of such part or parts which in the opinion of the Company have been defective. The Company shall not be liable for labour costs or transportation charges in connection with the replacement or repair of defective parts.

This warranty to repair applies only to new and unused Thomas S/S Loaders which after shipment from the factory have not been altered, changed, repaired, or treated in any manner whatsoever and does not extend to trade accessories though sold or operated with the Company's loader. Trade accessories such as, but not limited to, engines, tires, batteries, are subject to the warranty of their respective manufacturers.

The Company and/or its authorized Thomas dealers shall not be liable for consequential damages or contingent liabilities for the fitness of any Thomas S/S Loader for any particular purpose.

This warranty is expressly in lieu of any other express or implied warranty, condition or guarantee of this Thomas S/S Loader or any part thereof, including any implied warranty or condition of merchantability or fitness and of any other obligations on the part of the Company or the selling dealer.

No representative of the Company has authority to change this warranty in any manner whatsoever and no attempt to repair or promise to repair or improve the Thomas S/S Loader covered by this warranty by any representative of the Company shall waive or change or extend this warranty in any manner whatsoever.

N.B. Read and practice your Thomas S/S Loader operating and servicing instructions. Failure to do this may void your warranty.

INDEX – T173HL ‘S’

MAIN FRAME 1.

A-1	Fuel System.....	1.1
A-2	Rear Door and Latch.....	1.2
A-3	Quick-Tach.....	1.3
A-4	Seat Belt and Shields.....	1.4
A-5	Decals and Wheel Equipment.....	1.4.1
A-6	ROPS Ass’y.....	1.4.2
A-7	Boom Lock.....	1.5
A-7	Pivot Pins.....	1.5
A-8	Boom Lockdown.....	1.6

MAIN FRAME

CONTROLS 2.

A-9	Control Levers (R.H. Side).....	2.1
A-10	Control Levers (L.H. Side).....	2.1.1
A-11	Foot Pedals.....	2.2
A-12	Throttle.....	2.3
B-1	Restraint Bar and Brake Cable.....	2.4

CONTROLS

FINAL DRIVE TRANSMISSION 3.

B-2	Transmission Housing.....	3.1
B-3	Axle Assembly.....	3.2
B-4	Idler Sprocket.....	3.3
B-4	Chains and Connecting Links.....	3.3
B-5	Parking Brake.....	3.4

FINAL
DRIVE
TRANSMISSION

HYDRAULIC SYSTEM 4.

B-6	Oil Reservoir.....	4.1
B-7	Boom Lift Circuit.....	4.2
B-8	Bucket Tilt Circuit.....	4.3
B-9	Auxiliary Hydraulic Circuit.....	4.4
B-10	Auxiliary Gear Pump.....	4.5
B-11	Control Valve.....	4.6
B-12	Control Valve Locks.....	4.6.1
C-1	Hydraulic Oil Cooler and Filter.....	4.7
C-2	Lift Cylinder.....	4.8
C-3	Tilt Cylinder.....	4.8.1

HYDRAULIC
SYSTEM

HYDROSTATIC DRIVE SYSTEM 5.

C-4	Hydrostatic Drive Circuit (R.H. Side).....	5.1
C-5	Hydrostatic Drive Circuit (L.H. Side).....	5.1.1
C-6	Front Hydrostatic Pump.....	5.2
C-7	Rear Hydrostatic Pump.....	5.2.1
C-8	Torque Motor.....	5.3

HYDROSTATIC
DRIVE
SYSTEM

ELECTRICAL SYSTEM 6.

C-9	Electrical Schematic (ROPS Side) to S/N LK000667.....	6.1
C-10	Electrical Schematic (Engine Side) to S/N LK000667.....	6.2
C-11	Electrical Schematic (ROPS Side) from S/N LK000668-onward.....	6.3
C-12	Electrical Schematic (Engine Side) from S/N LK000668-onward.....	6.4

ELECTRICAL
SYSTEM

ENGINE EQUIPMENT 7.

D-1	Exhaust System.....	7.1
D-1	Air Cleaner.....	7.1
D-2	Radiator and Engine Mounts.....	7.2
D-3	Universal Joint.....	7.3

ENGINE
EQUIPMENT

OPTIONAL EQUIPMENT 8.

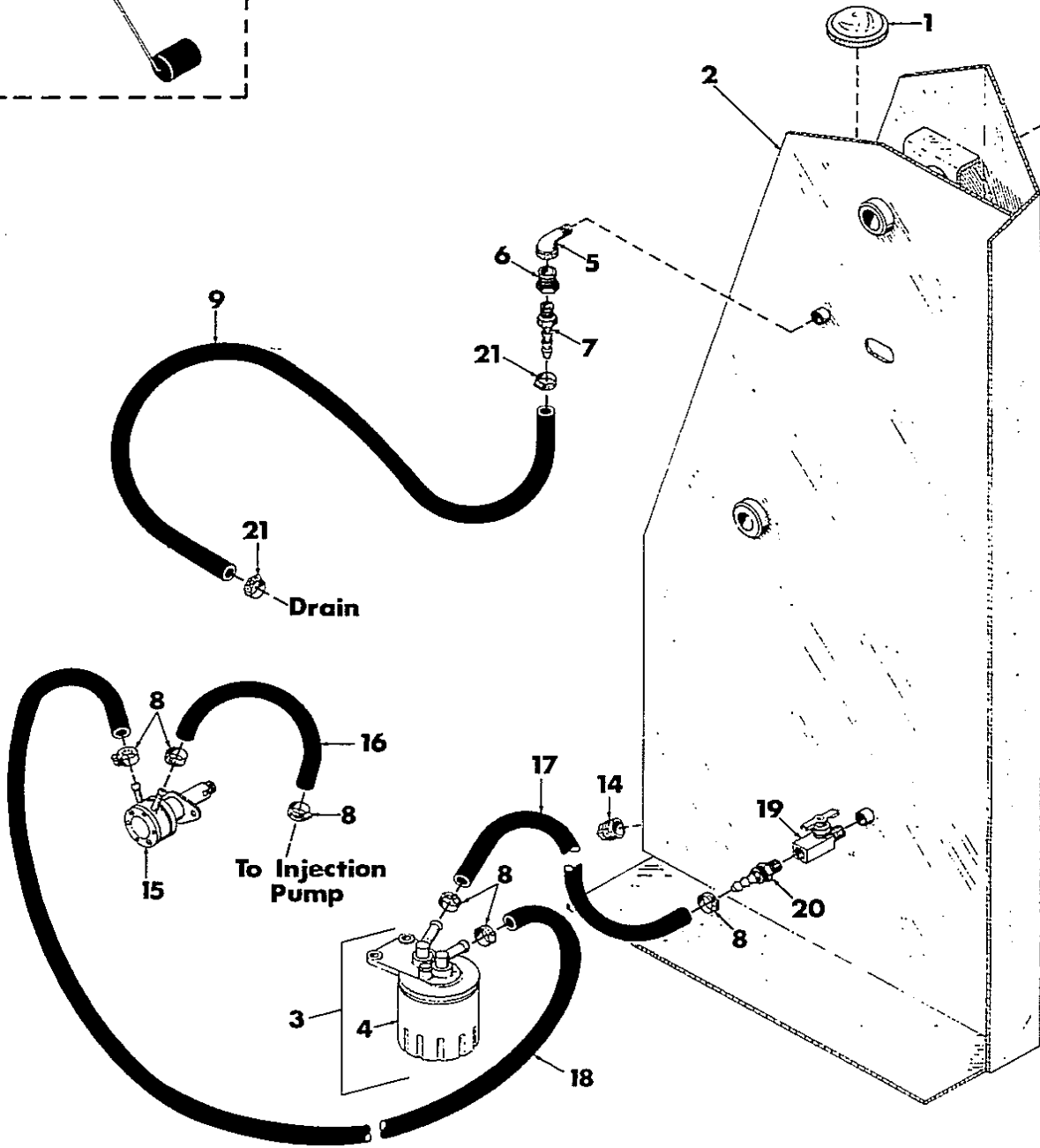
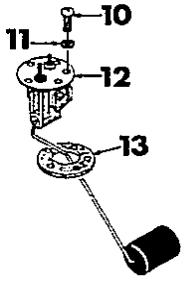
D-4	Electric Auxiliary.....	8.1
D-5	Hand Control Lever (R.H. Side).....	8.2
D-6	Hand Control Lever (L.H. Side).....	8.3
D-7	Back-Up Alarm.....	8.4
D-8	Horn Kit.....	8.5
D-9	Wheel Equipment.....	8.6
D-10	Sound Insulation.....	8.7

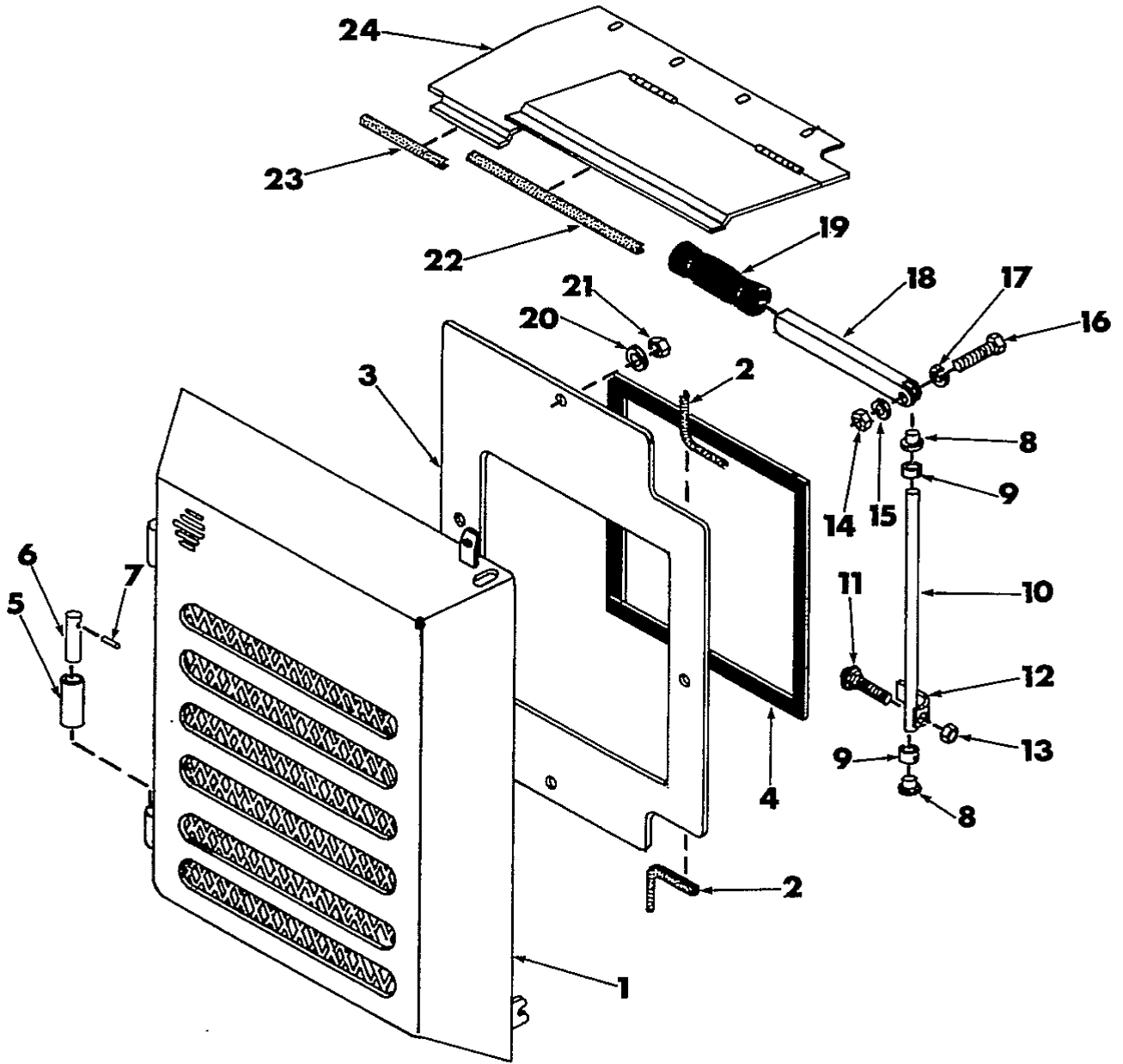
OPTIONAL
EQUIPMENT

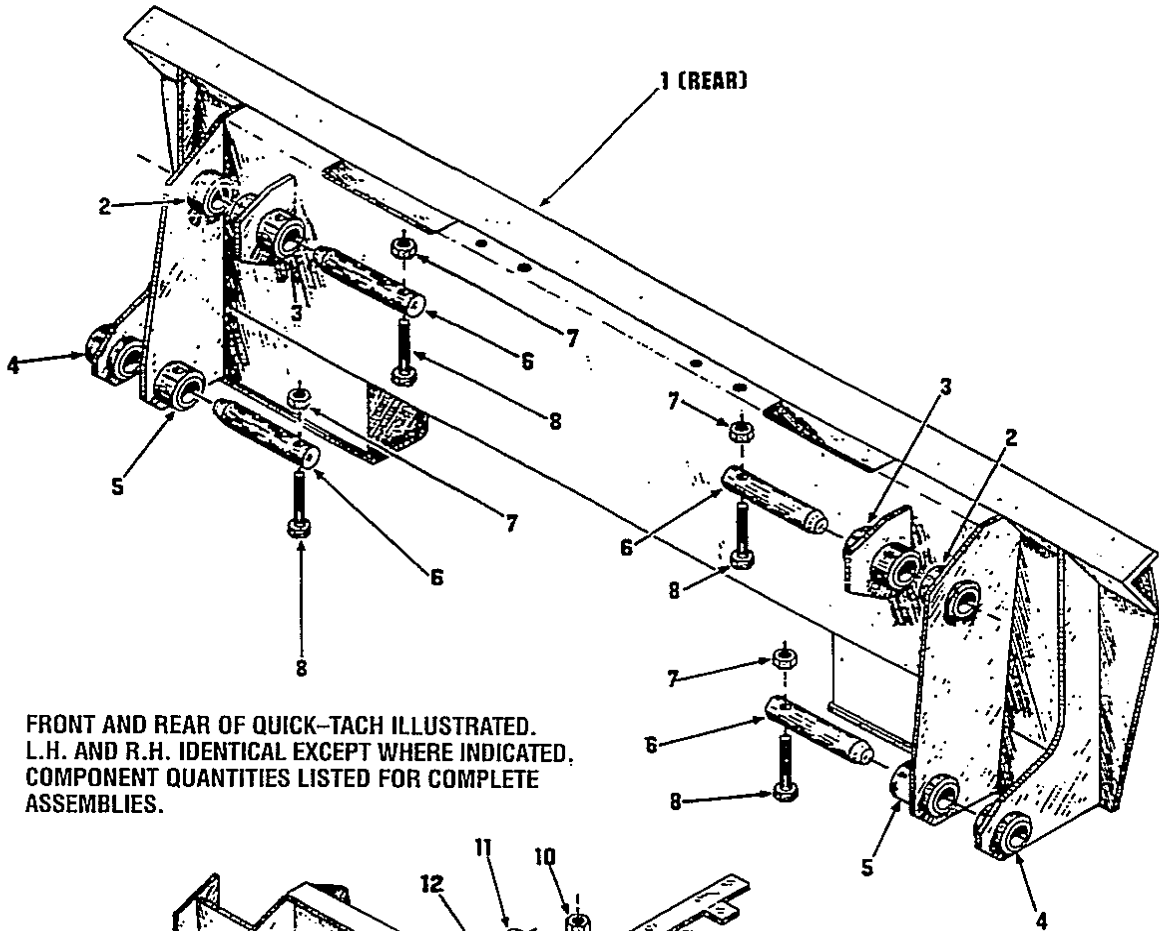
MAIN FRAME 1.

A-1	Fuel System	1.1
A-2	Rear Door and Latch.....	1.2
A-3	Quick-Tach	1.3
A-4	Seat Belt and Shields.....	1.4
A-5	Decals and Wheel Equipment.....	1.4.1
A-6	ROPS Ass'y.....	1.4.2
A-7	Boom Lock.....	1.5
A-7	Pivot Pins.....	1.5
A-8	Boom Lockdown.	1.6

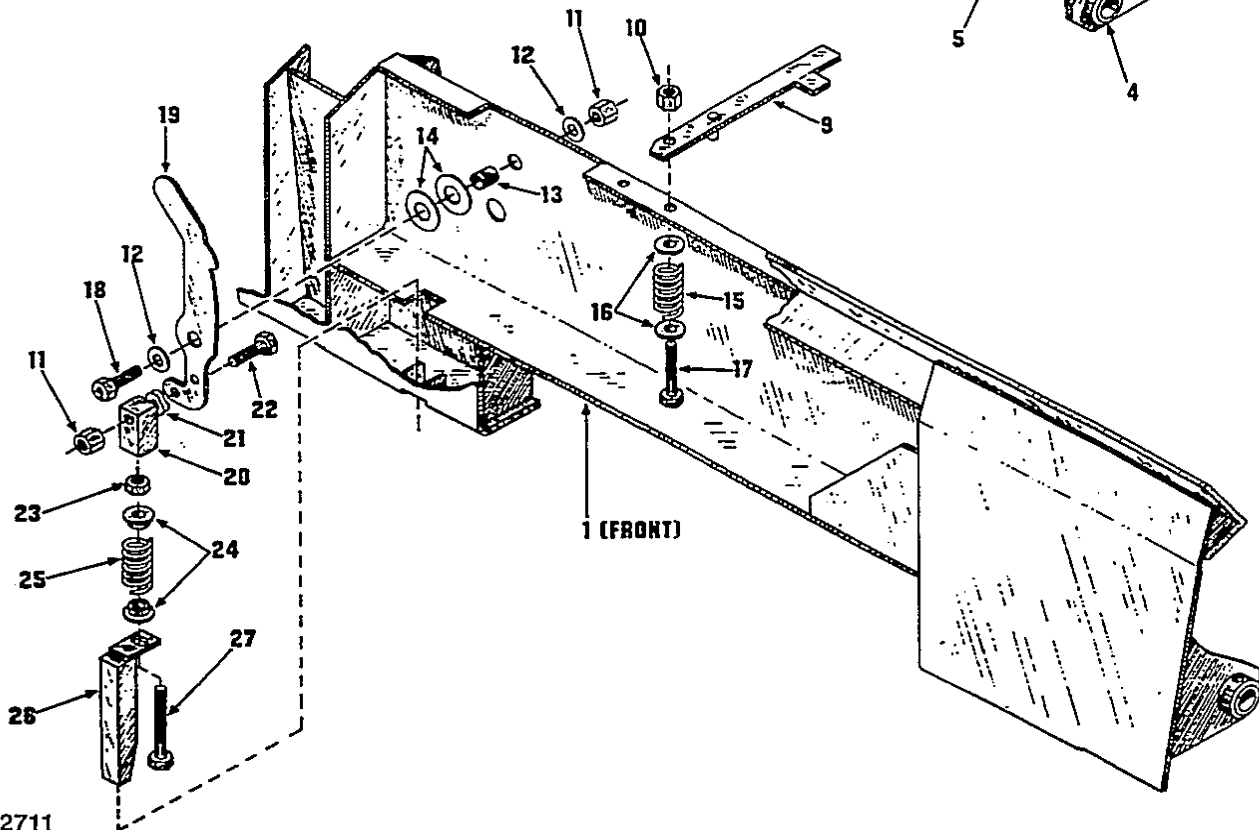
MAIN FRAME







NOTE: FRONT AND REAR OF QUICK-TACH ILLUSTRATED.
L.H. AND R.H. IDENTICAL EXCEPT WHERE INDICATED.
COMPONENT QUANTITIES LISTED FOR COMPLETE
ASSEMBLIES.



SEAT BELT AND SHIELDS (con't). DECALS AND WHEEL EQUIPMENT

1.4.1

REF. NO.	PART NO.	DESCRIPTION	T173 HL'S'	SERIAL NO.
36	1387	Bolt 3/8" x 1 1/4"	2	
37	40347	Side Filler Shields L/H	1	
38	28957	Side Filler Shields R/H	1	
39	5170	Bolt 1/4" x 1" UNC	4	
40	2279	Washer Loc 1/4"	4	
41	1350	Nut 1/4" UNC	4	
42	526	Safety Tray	3	
43	38560	Isolator, Neopreme	1	
44	1023	Bolt 1/2" x 4"	1	
45	20235	Washer Snubbing	3	
46	20860	Nut 1/2" UNC	1	
*47	30501	Boot	2	

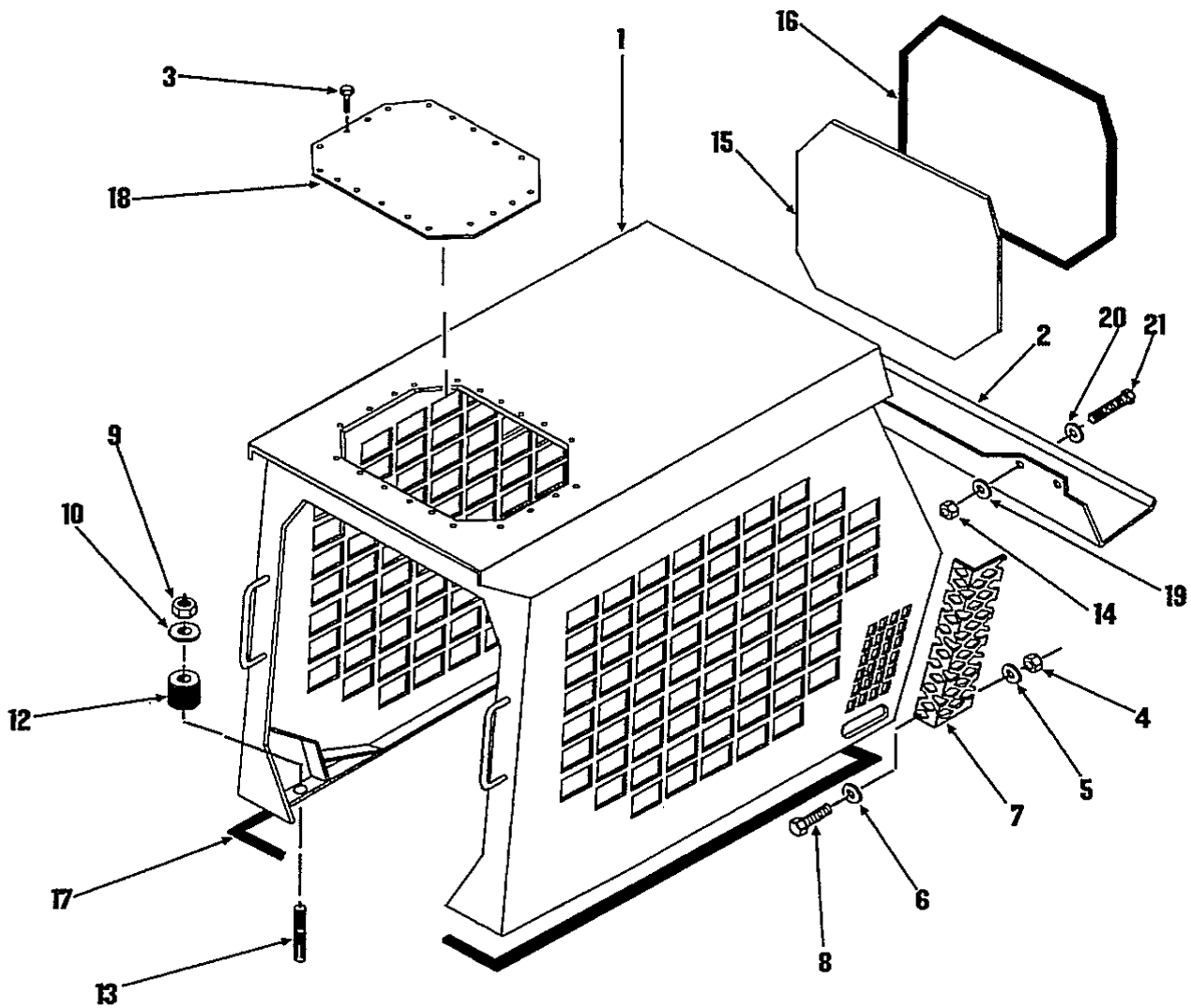
* Not Illustrated

DECALS AND PAINT

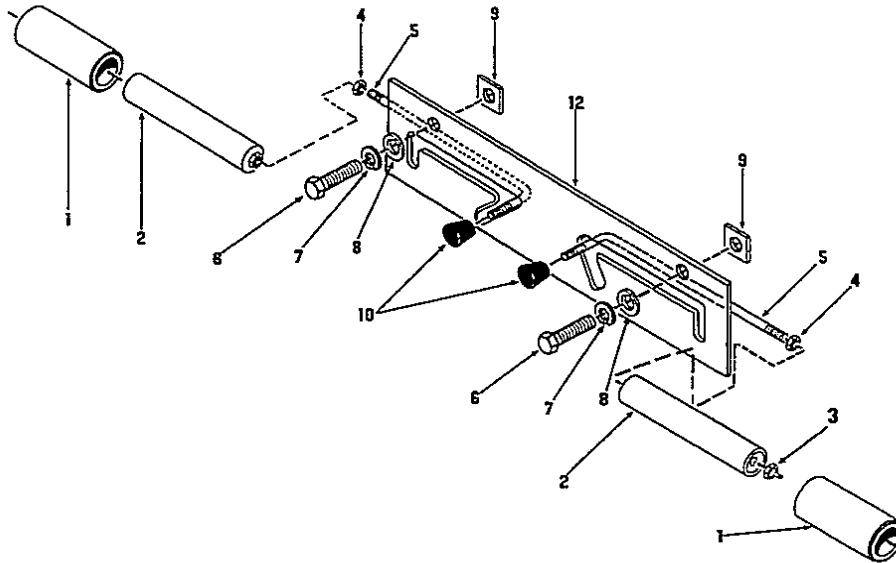
1	38606	T173-HLS Model Des. Kit	2	
2	39198	Common Decal Kit	1	
3	23579	Paint, (Spray) Orange	1	
4	35487	Paint, (Litre) Orange	1	
5	10547	Paint, (Spray) Black	1	
6	39572	Paint, (Spray) Gray	1	
	37426	Decal, Loader Arm Stripe	1	

WHEEL EQUIPMENT

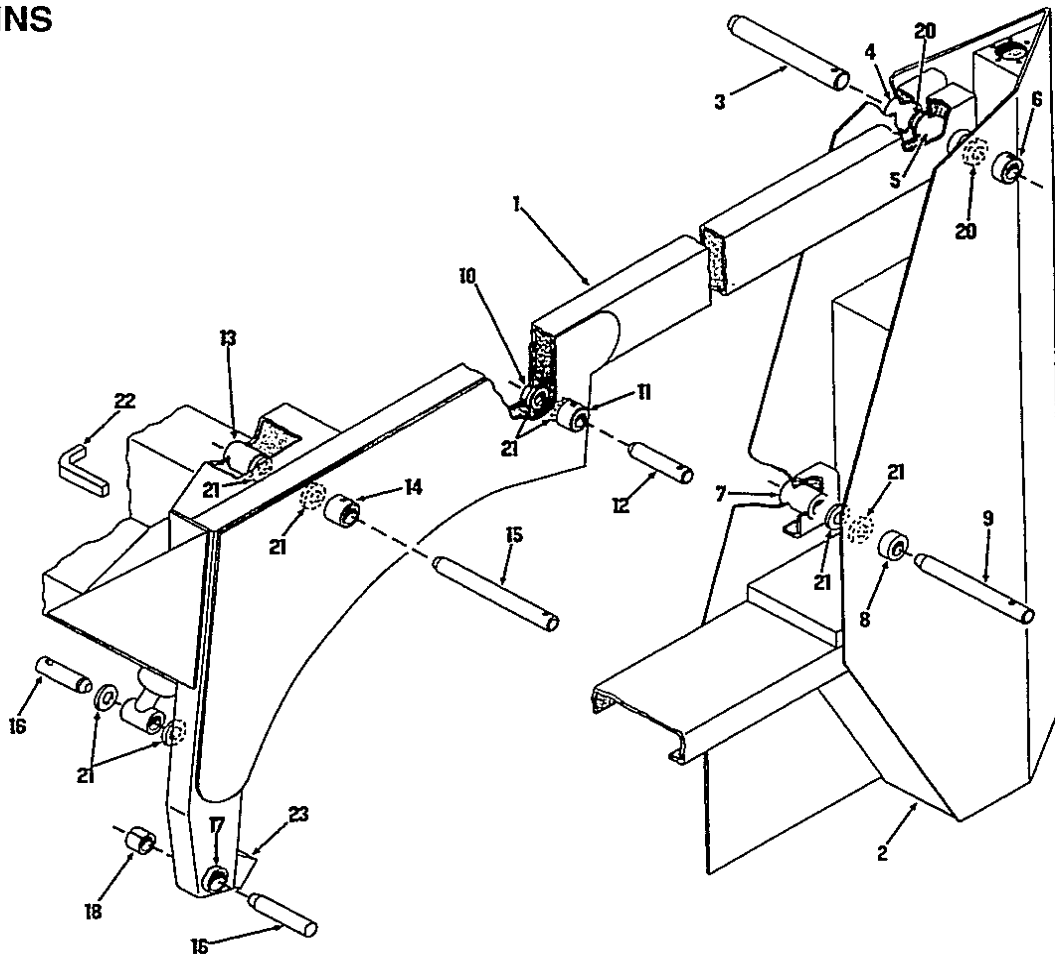
1	957985	10.00 X 16.5 Tire/Rim Ass'y.	4	
2	956643	12.00 X 16.5 Tire/Rim Ass'y.	4	
3	16982	12.00 X 16.5 8 Ply Tire	4	
4	6800	10.00 X 16.5 6 Ply Tire	4	
5	36491	16.5 x 9.75 8 Bolt Rim 12.00 Tire	4	
6	31583	16.5 x 8.25 8 Bolt Rim 10.00 Tire	4	
7	7019	Valve Stem	4	
8	5832	Nut, Wheel	32	
9	26188	Stud, Wheel	32	



BOOM LOCK



PIVOT PINS



BOOM LOCK

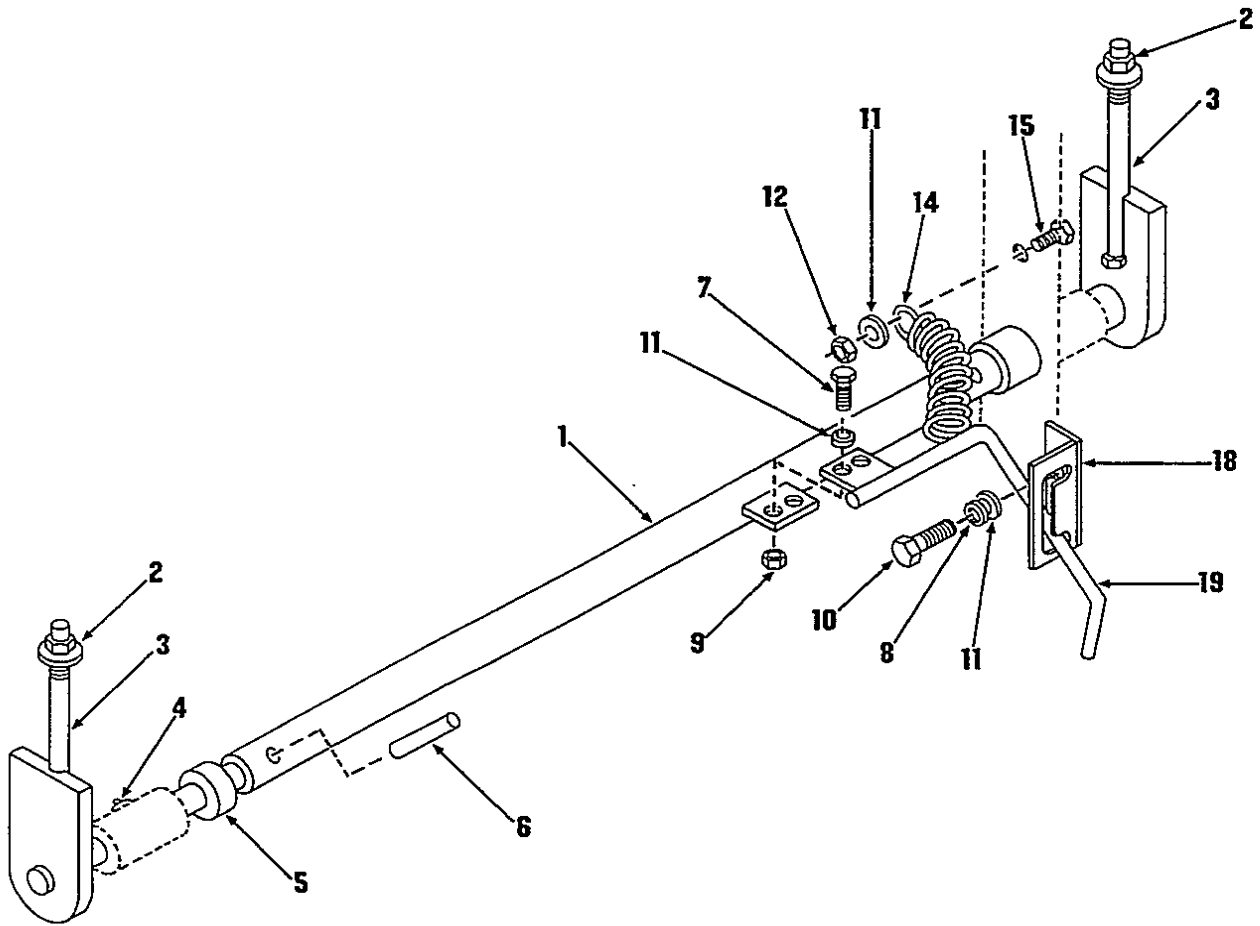
1.5

REF. NO.	PART NO.	DESCRIPTION	T173 HL'S'	SERIAL NO.
1	17518	Lock Bushing	2	
2	40367	Lock Pin	2	
3	2010	Grease, Zerk	2	
4	1350	Nut, 1/4" UNC	2	
5	40337	Locking, Pin Arm	2	
6	2593	Bolt, 5/16" x 1 1/2" UNC	2	
7	6356	Washer, Loc 5/16"	2	
8	1650	Washer, Flat 5/16"	2	
9	6086	Captive, Nut 5/16"	2	
10	39546	Knob	2	
11	38797	Panel Lock	1	

PIVOT PINS

1.5

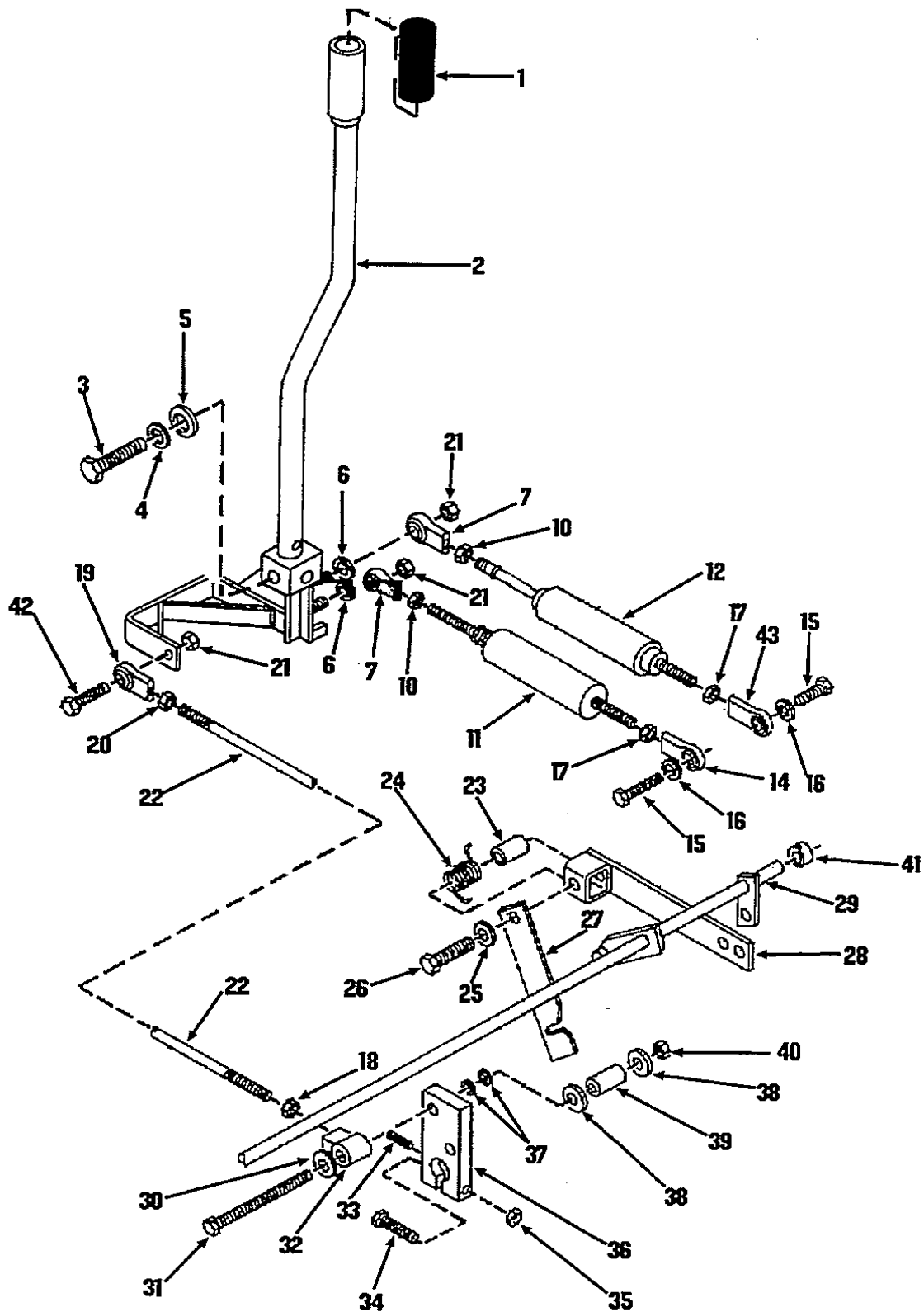
REF. NO.	PART NO.	DESCRIPTION	T173 HL'S'	SERIAL NO.
1	960767	Lift Arm Assembly	1	
2	NSP	L.H. Oil Tank Assembly	1	
3	40011	Lift Arm Hinge Pin, 1 1/2" x 9 7/16"	2	
4	40015	Short Hinge Bushing	2	
5	30771	Hinge Bushing, 2.25 O.D. x 1.512" I.D. x 3"	2	
6	40014	Long Hinge Bushing	2	
7	40017	Short Hinge Bushing	2	
8	40016	Long Bushing, Lift Arm	2	
9	40012	Lift Cylinder Rear Pin, 1 1/4" x 9 7/16"	2	
10	30897	Short Ram Hinge Bushing	2	
11	30896	Ram Hinge Bushing	2	
12	29245	Lift Arm Lift Pin, 1 1/4" x 4 1/4"	2	
13	30899	Inside Tilt Bushing	2	
14	30898	Outside Tilt Bushing	2	
15	40013	Tilt Cylinder Hinge Pin	2	
16	29059	Hardened Pin	4	
17	32978	Front Arm Hinge Sleeve	2	
18	26743	Hardened Bushing	2	
19	35449	Grease Fitting	4	
20	32614	1 1/2" Neopreme Flat Washer	2	
21	32615	1 1/4" Neopreme Flat Washer	10	
22	33741	Plate, Tilt Lock Bracket	2	



CONTROLS 2.

A-9 Control Levers (R.H. Side)2.1
A-10 Control Levers (L.H. Side)2.1.1
A-11 Foot Pedals.....2.2
A-12 Throttle.....2.3
B-1 Restraint Bar and Brake Cable2.4



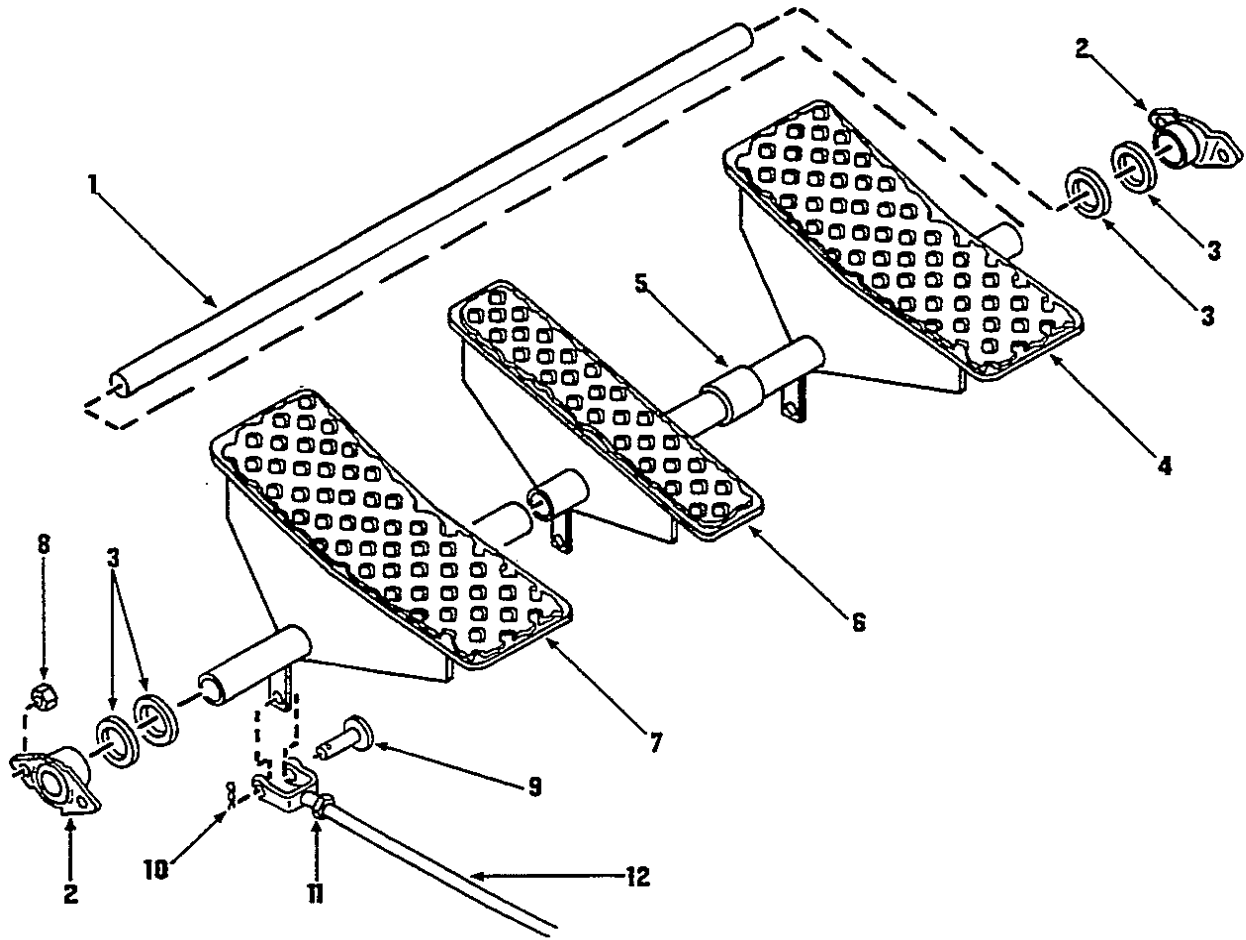


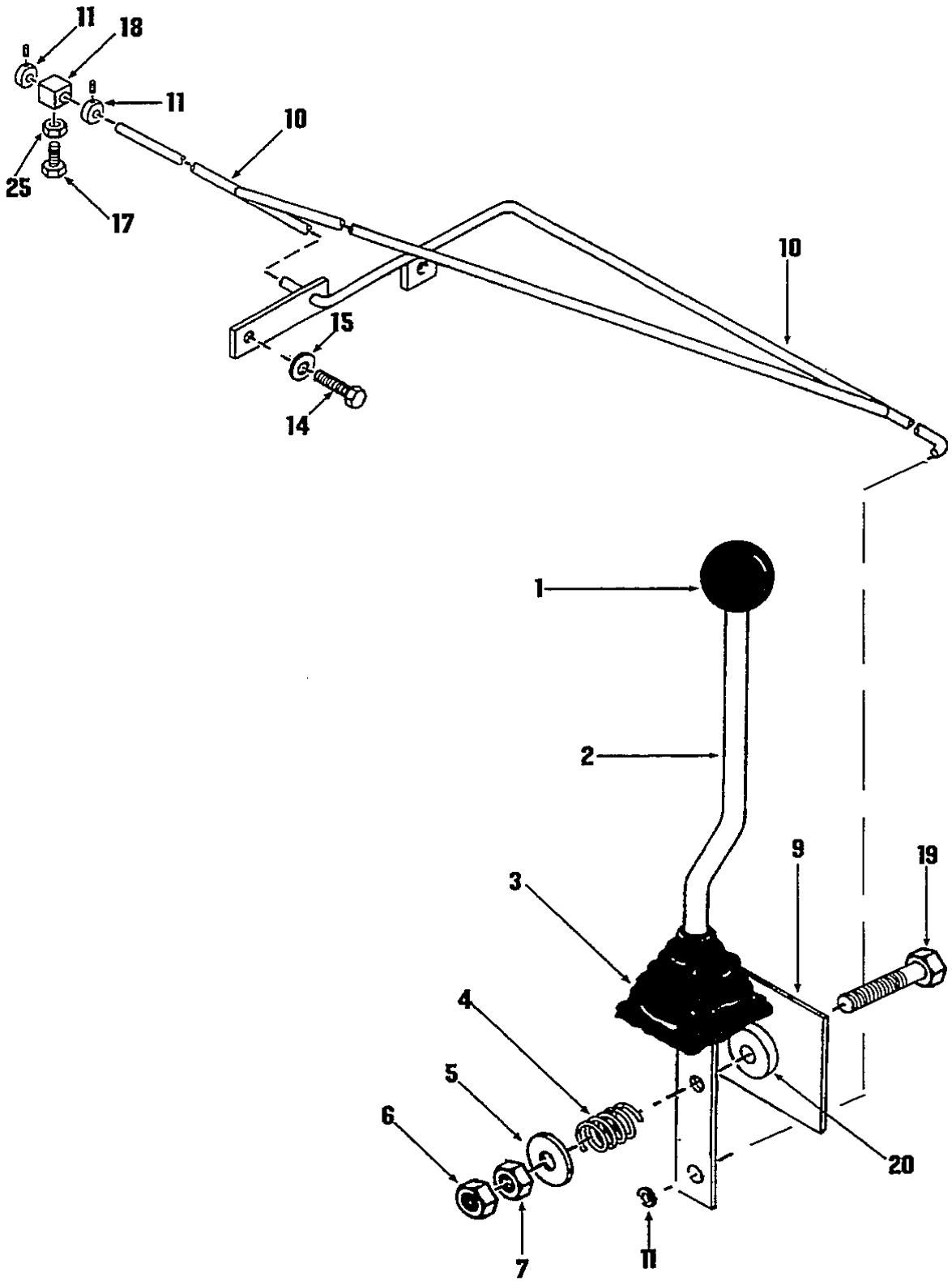
CONTROL LEVER (L.H. SIDE)

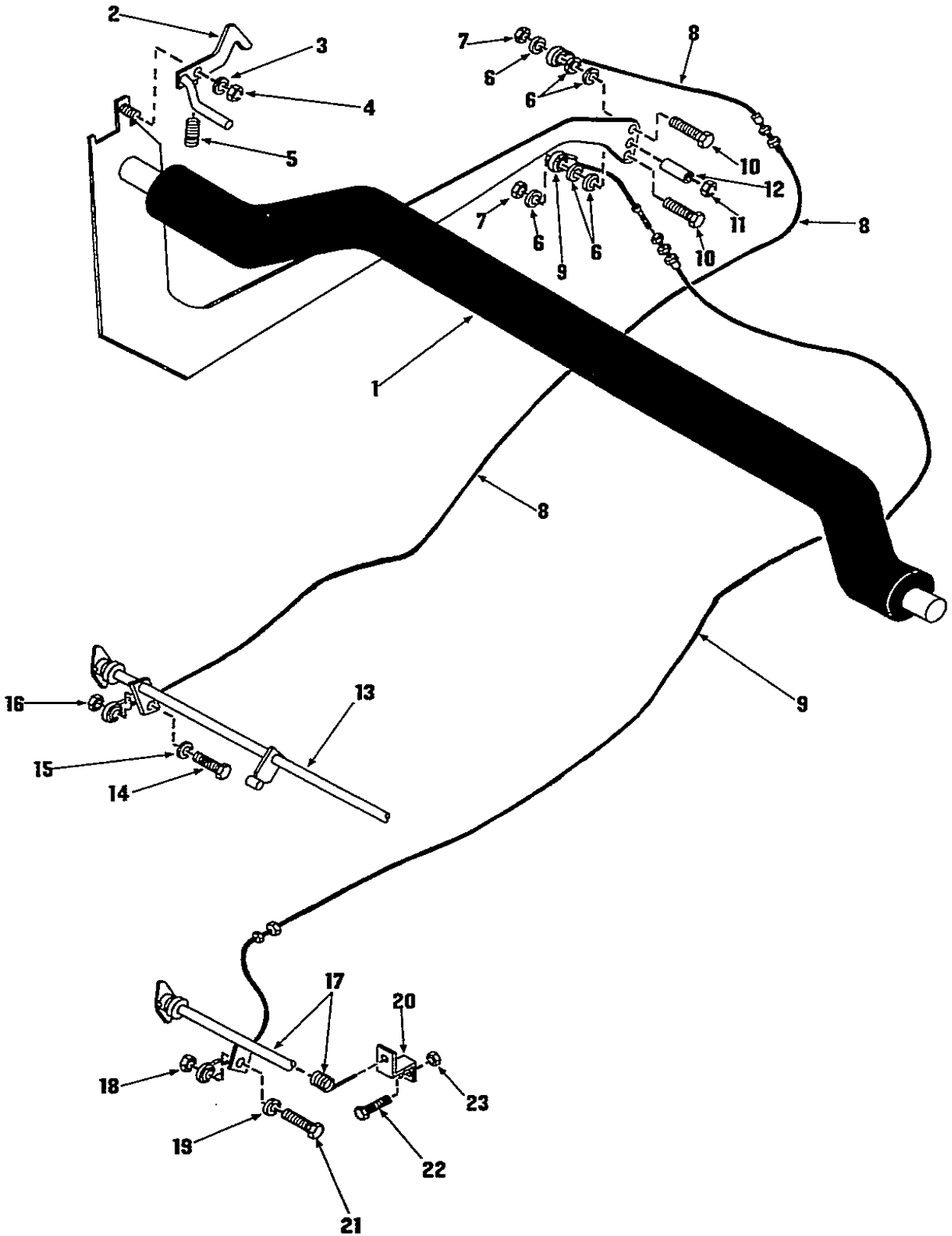
2.1.1

REF. NO.	PART NO.	DESCRIPTION	QUANTITY
1	3189	Lever Grip	1
2	960974	L.H. Control Lever Ass'y. L.H.	1
3	1643	Washer, Flat 3/8"	1
4	1642	Washer, Lock 3/8"	1
5	1673	Bolt, Hex. 3/8" x 3/4" UNC Gr. 5	1
6	21174	Washer, .390 ID x 5/8" OD x 7 GA.	2
7	7465	Nut, Nylok 3/8" UNC	3
8	5803	Rod End Ass'y. .375 Female	1
9	1672	Bolt, Hex. 3/8" x 1 1/2" UNC Gr. 5	1
10	1898	Nut, Hex. 3/8" UNF	2
11	7465	Nut, Nylok 3/8" UNC	3
12	5803	Rod End Ass'y., .375 Female	1
13	5803	Rod End Ass'y., .375 Female	1
14	959090	Hydroback Ass'y.	1
15	14860	Shock Absorber	1
16	1193	Bolt, Hex. 3/8" x 1 UNC	2
17	1642	Washer, Lock 3/8"	2
18	1898	Nut, Hex. 3/8" UNF	2
19	15880	Rod End Ass'y.	1
20	5803	Rod End Ass'y. .375 Female	2
21	29066	Collar, Set 1/2" Dia.	1
22	29065	Bearing, Flange	1
23	2279	Washer, Lock 1/4"	2
24	2663	Bolt, Hex. 1/4" x 3/4" UNC Gr. 5	2
25	7465	Nut, Nylok 3/8" UNC	1
26	23016	Pivot Bushing	1
27	956137	Spring, Trsn. 115W. Dia. x 1.043	1
28	1643	Washer, Flat 3/8"	1
29	14620	Bolt, Hex. 3/8" x 2 3/4" UNC Gr. 5	1
30	40156	Pintle Lock Pivot, L.H.	1
31	1350	Nut, 1/4" UNC	1
32	17167	Pintle Lever	1
33	960840	Pintle Unlock Shaft Ass'y	1
34	7465	Nut, Nylok 3/8" UNC	1
35	29384	Washer, Fender 3/8" ID x 1 1/2" OD	2
36	29349	Bushing .500 OD x .391 ID x .625	1
37	21174	Washer, .390 ID x 5/8" OD x 7 Ga.	3
38	3313	Bolt, 1/4" UNC x 2" L.	1
39	14916	Roll Pin 3/8" x 1 1/2" L.	1
40	960402	Rod End, Isolated, L.H. Thread	1
41	35316	Nut, Hex. 3/8" UNF Gr. 5	1
42	29384	Washer, Fender 3/8" ID x 1 1/2" OD	1
43	22810	Bolt, Hex. 3/8" x 3 3/4" UNC Gr. 5	1
44	40306	L.H. Pintle Linkage Bar	1
45	1898	Nut, Hex 3/8" UNF	
*	30501	Boot	

* Not Illustrated



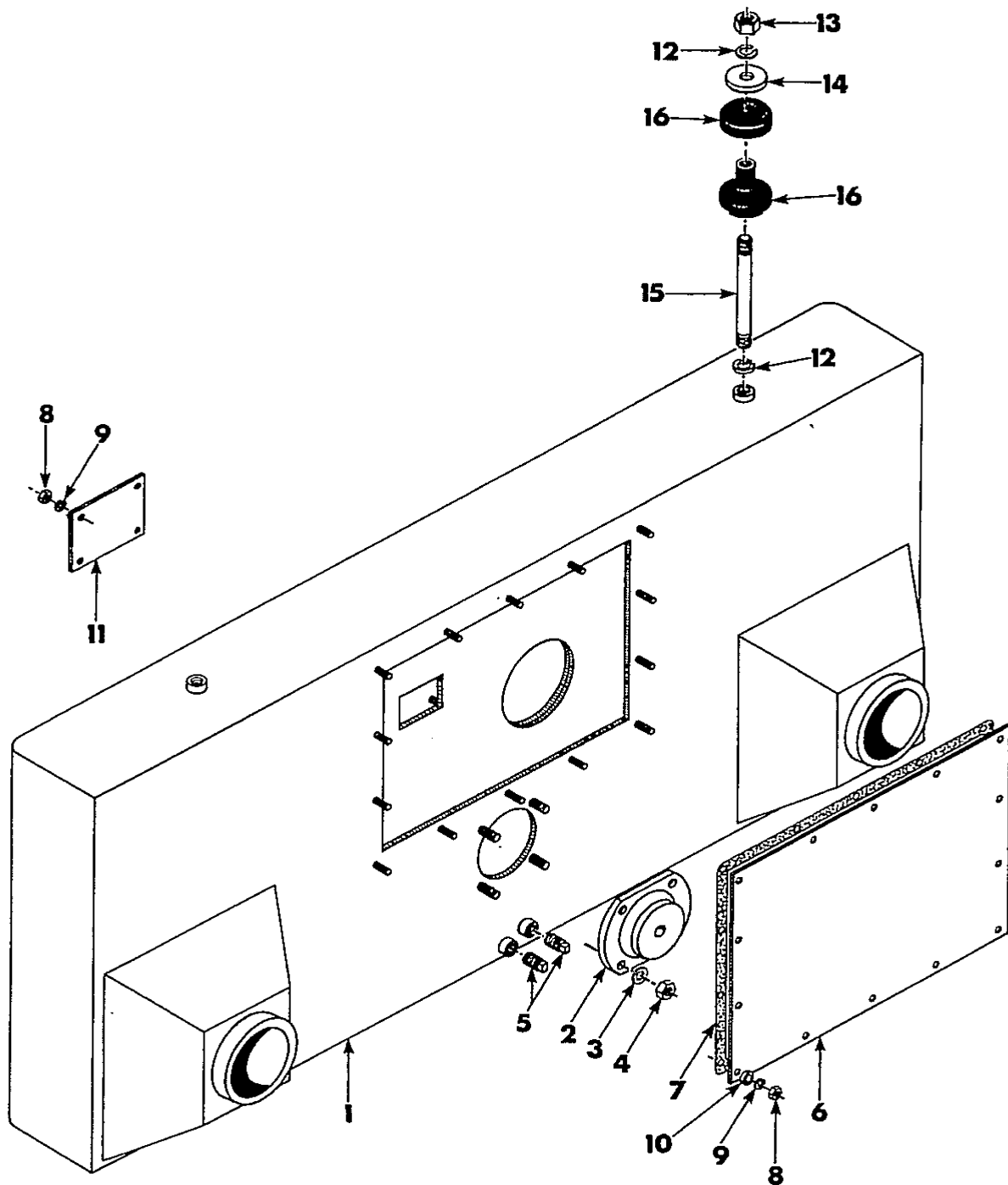




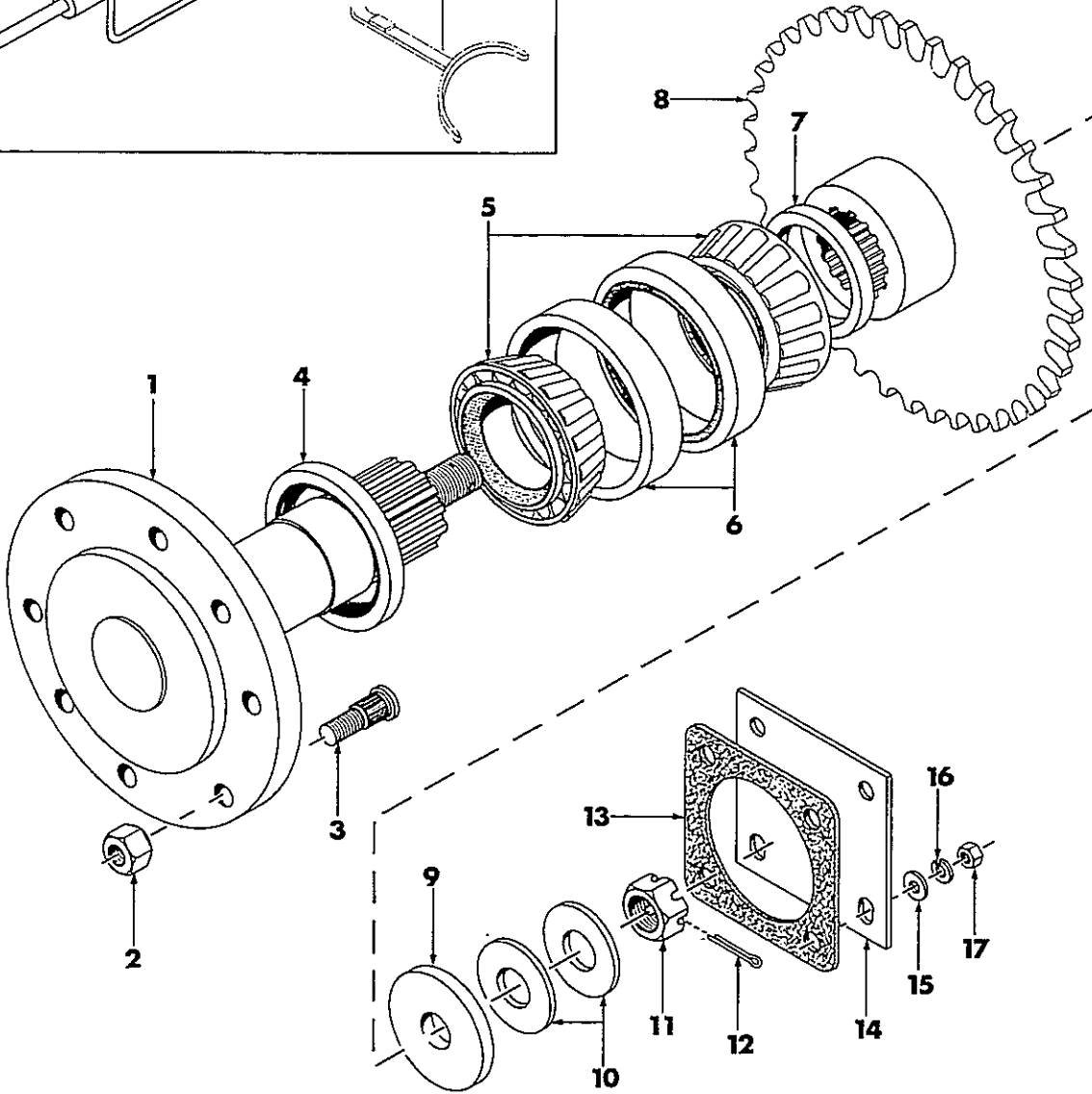
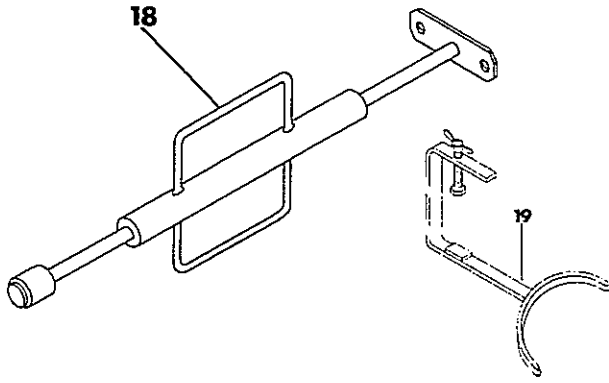
FINAL DRIVE TRANSMISSION 3.

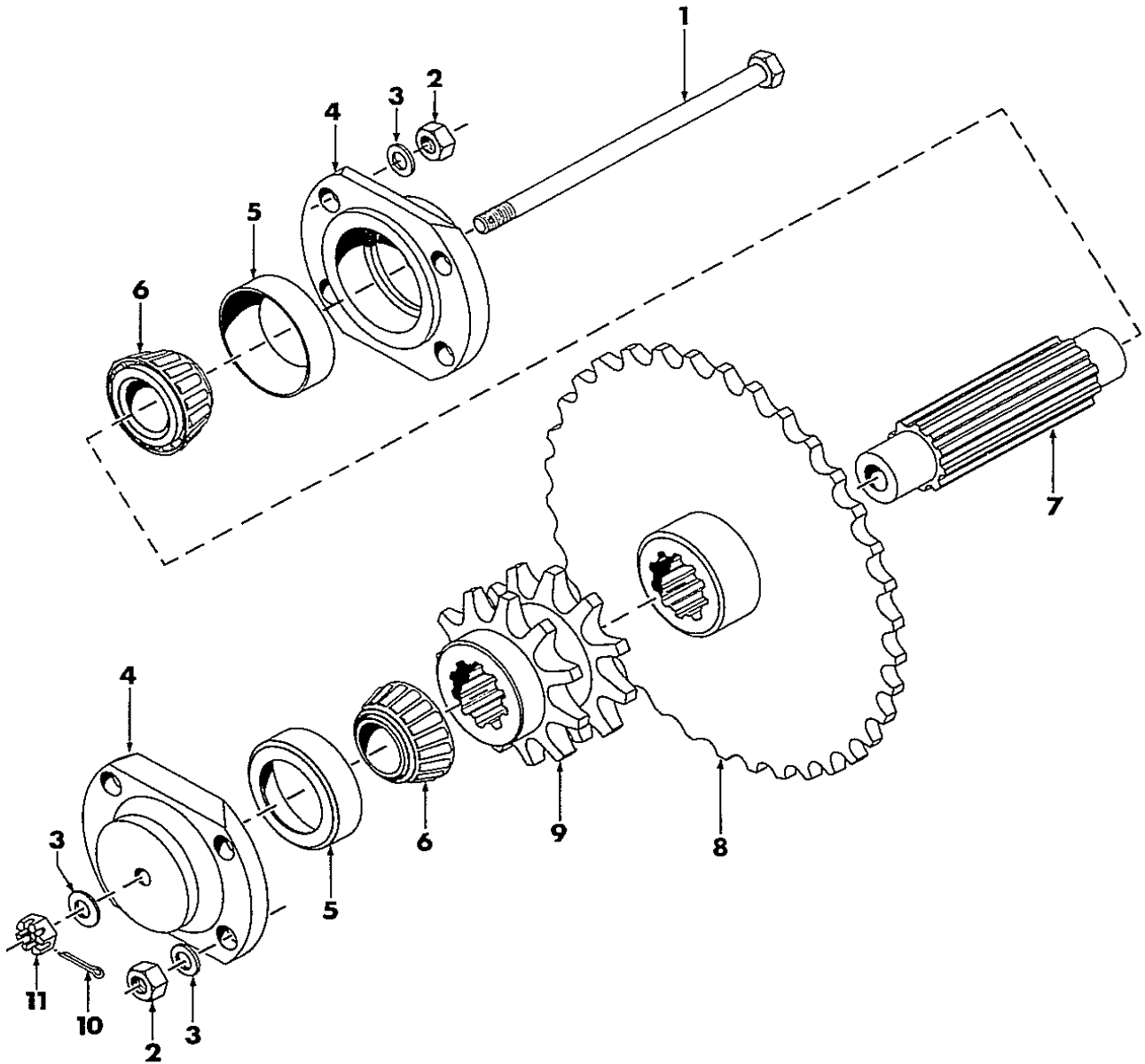
B-2 Transmission Housing.....3.1
B-3 Axle Assembly.....3.2
B-4 Idler Sprocket.....3.3
B-4 Chains and Connecting Links3.3
B-5 Parking Brake3.4

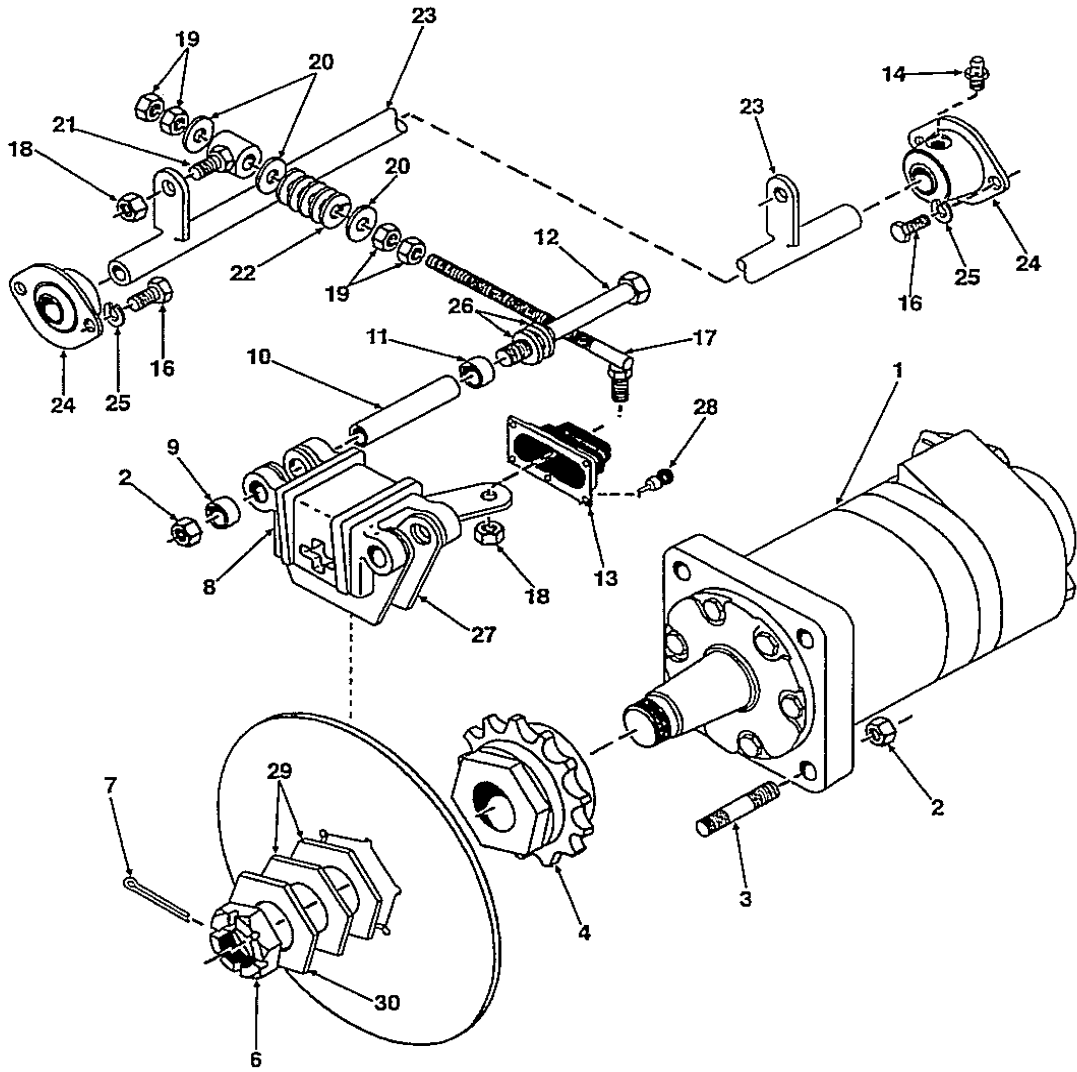




SPECIAL TOOLS

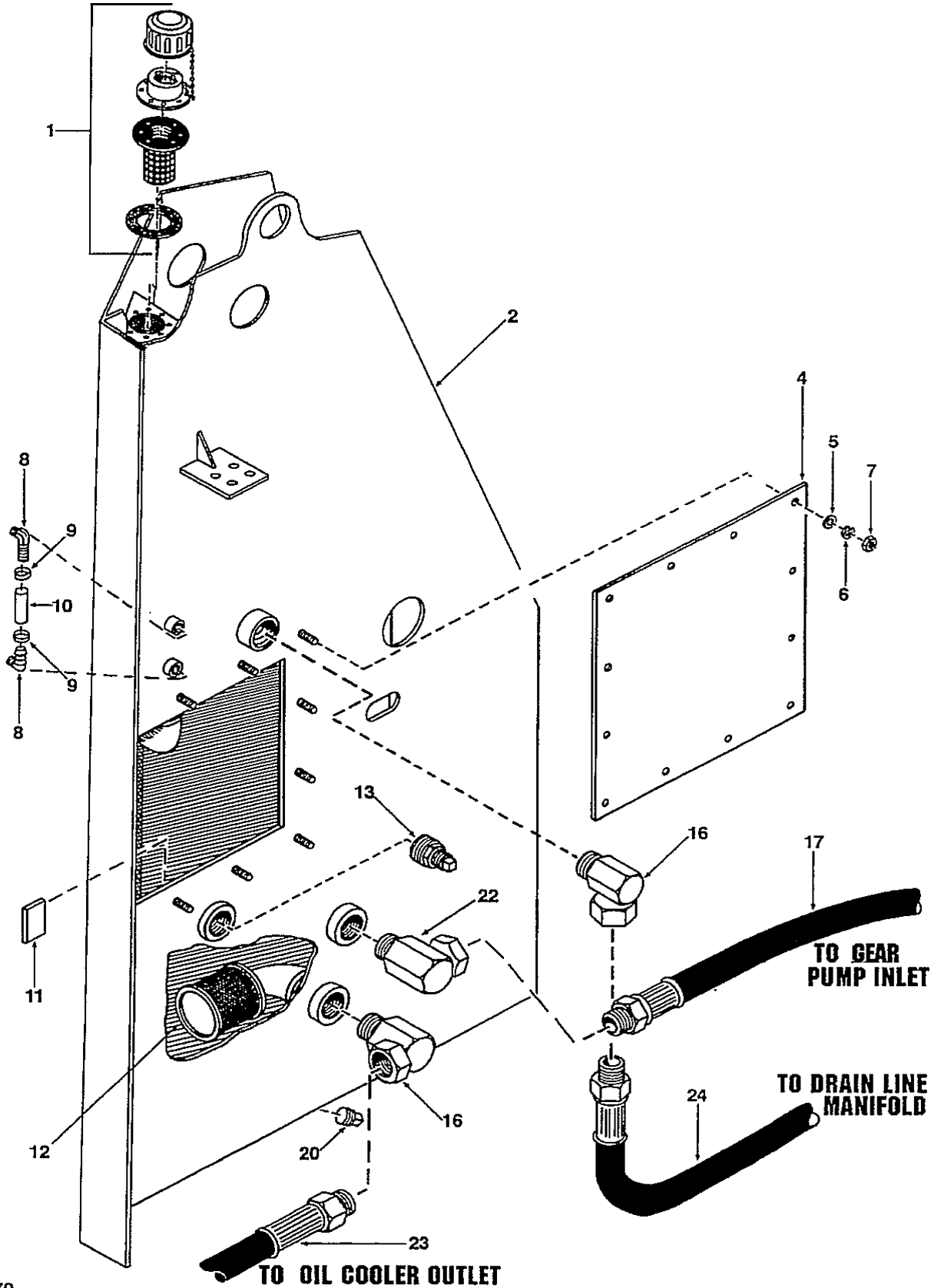


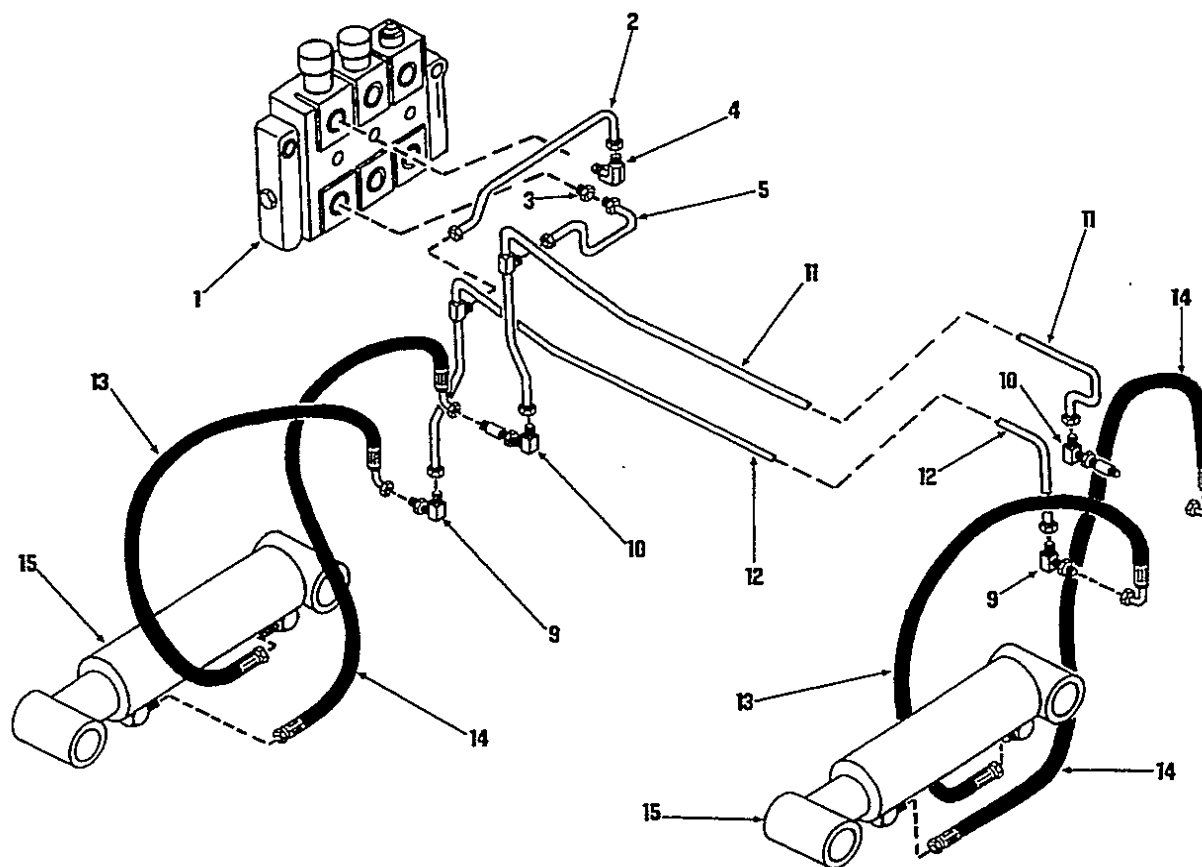


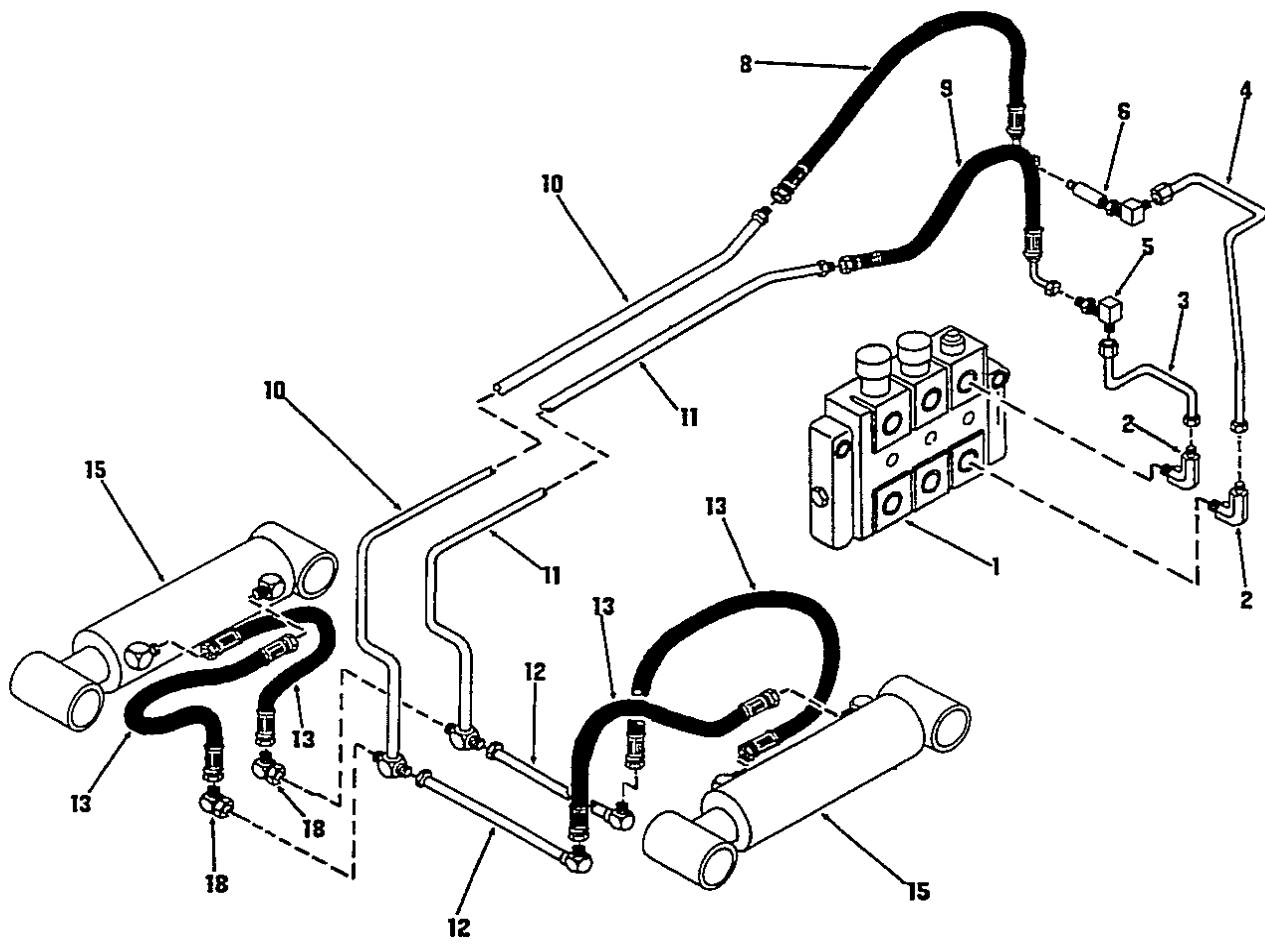


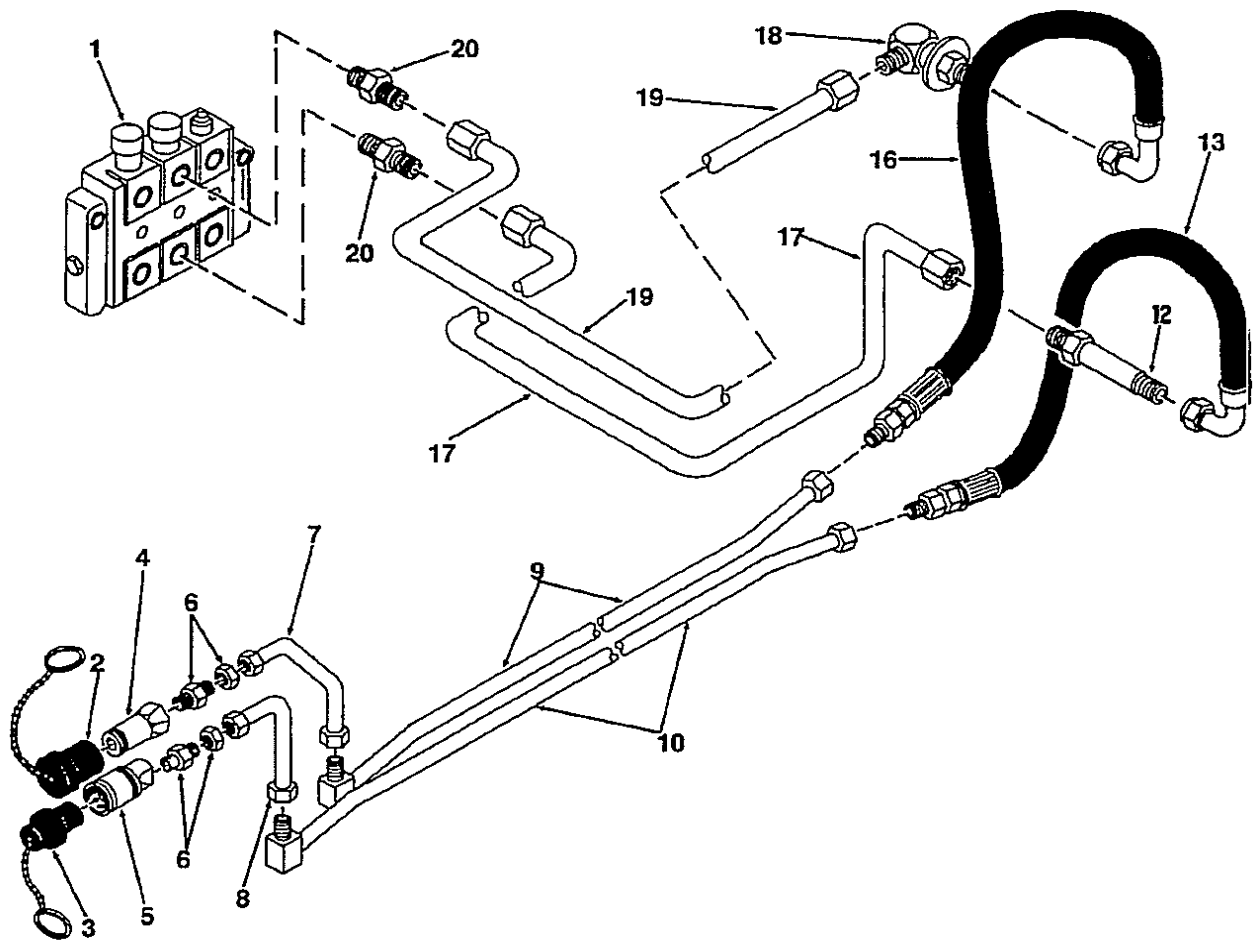
HYDRAULIC SYSTEM 4.		
B-6	Oil Reservoir	4.1
B-7	Boom Lift Circuit.....	4.2
B-8	Bucket Tilt Circuit	4.3
B-9	Auxiliary Hydraulic Circuit	4.4
B-10	Auxiliary Gear Pump	4.5
B-11	Control Valve.....	4.6
B-12	Control Valve Locks	4.6.1
C-1	Hydraulic Oil Cooler and Filter	4.7
C-2	Lift Cylinder	4.8
C-3	Tilt Cylinder	4.8.1

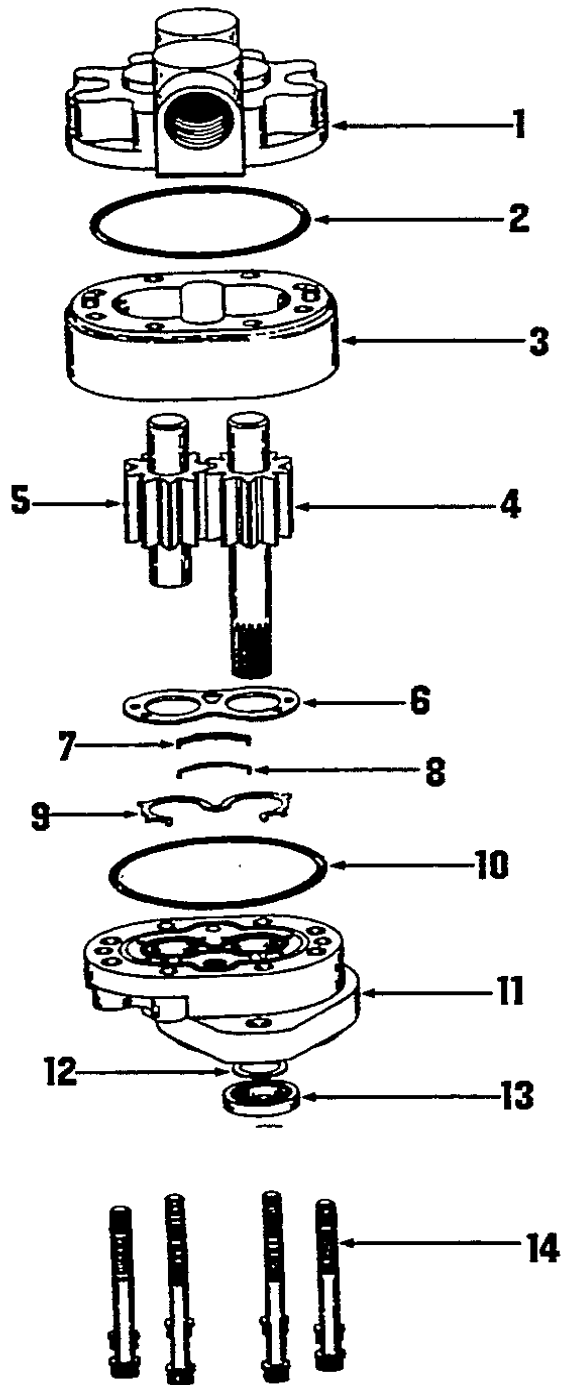
**HYDRAULIC
SYSTEM**

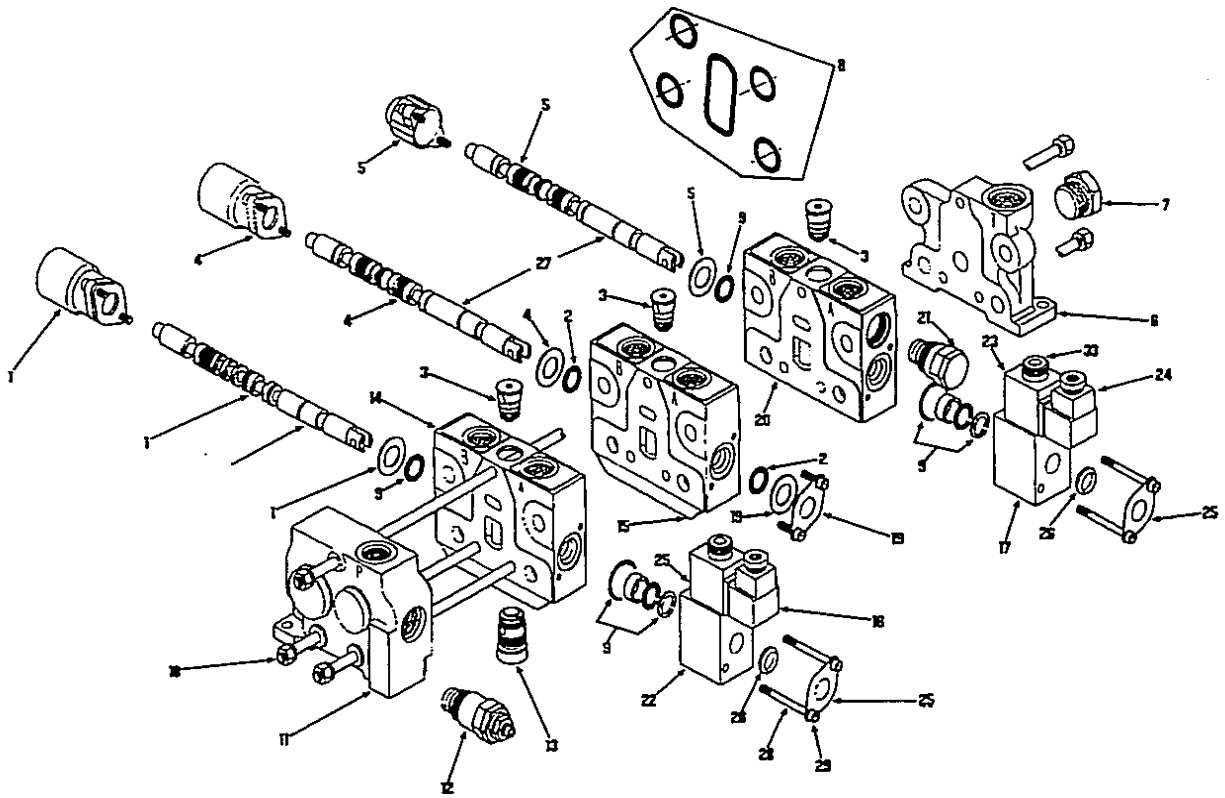


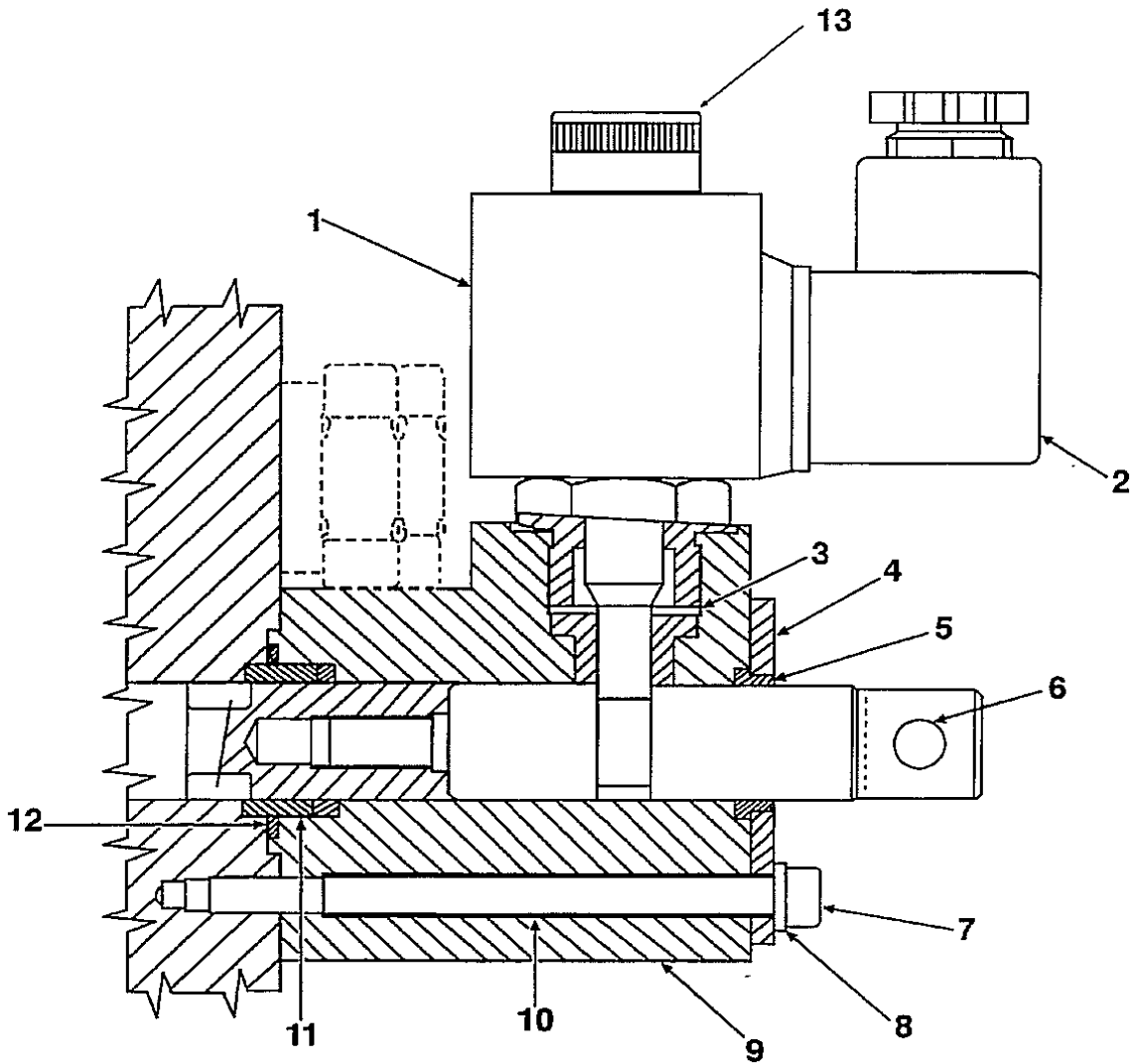


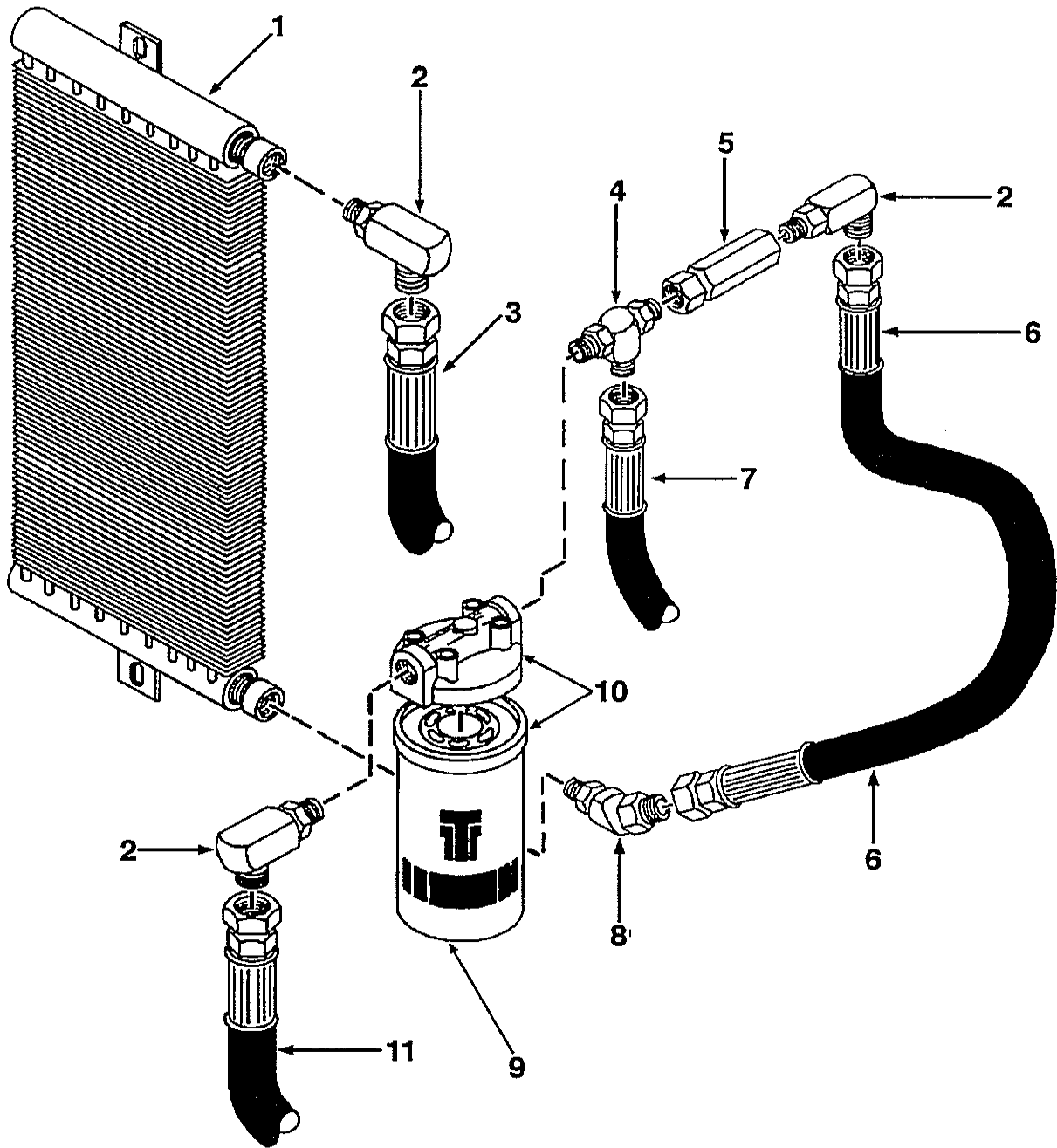




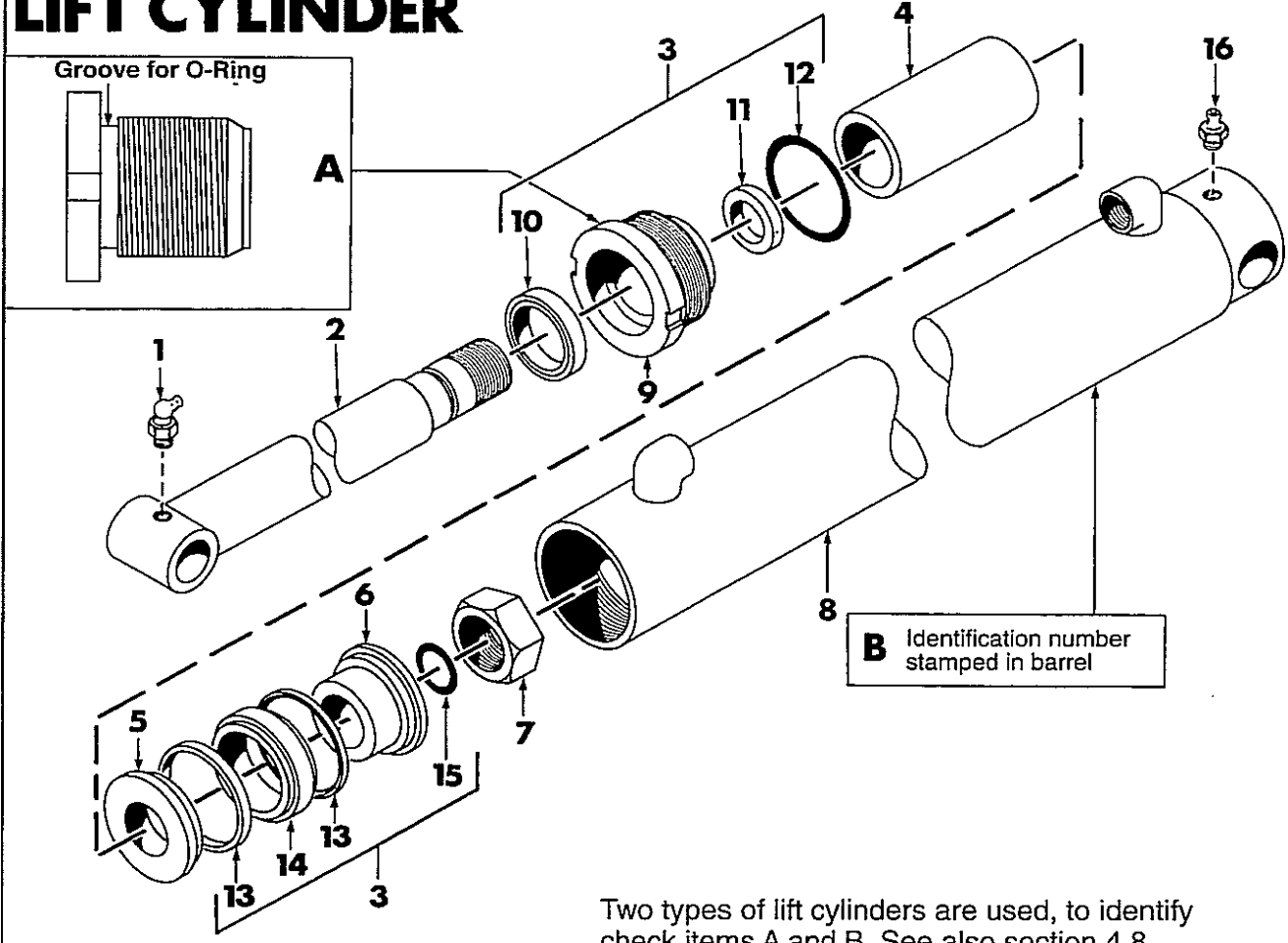








LIFT CYLINDER



Two types of lift cylinders are used, to identify check items A and B. See also section 4.8.

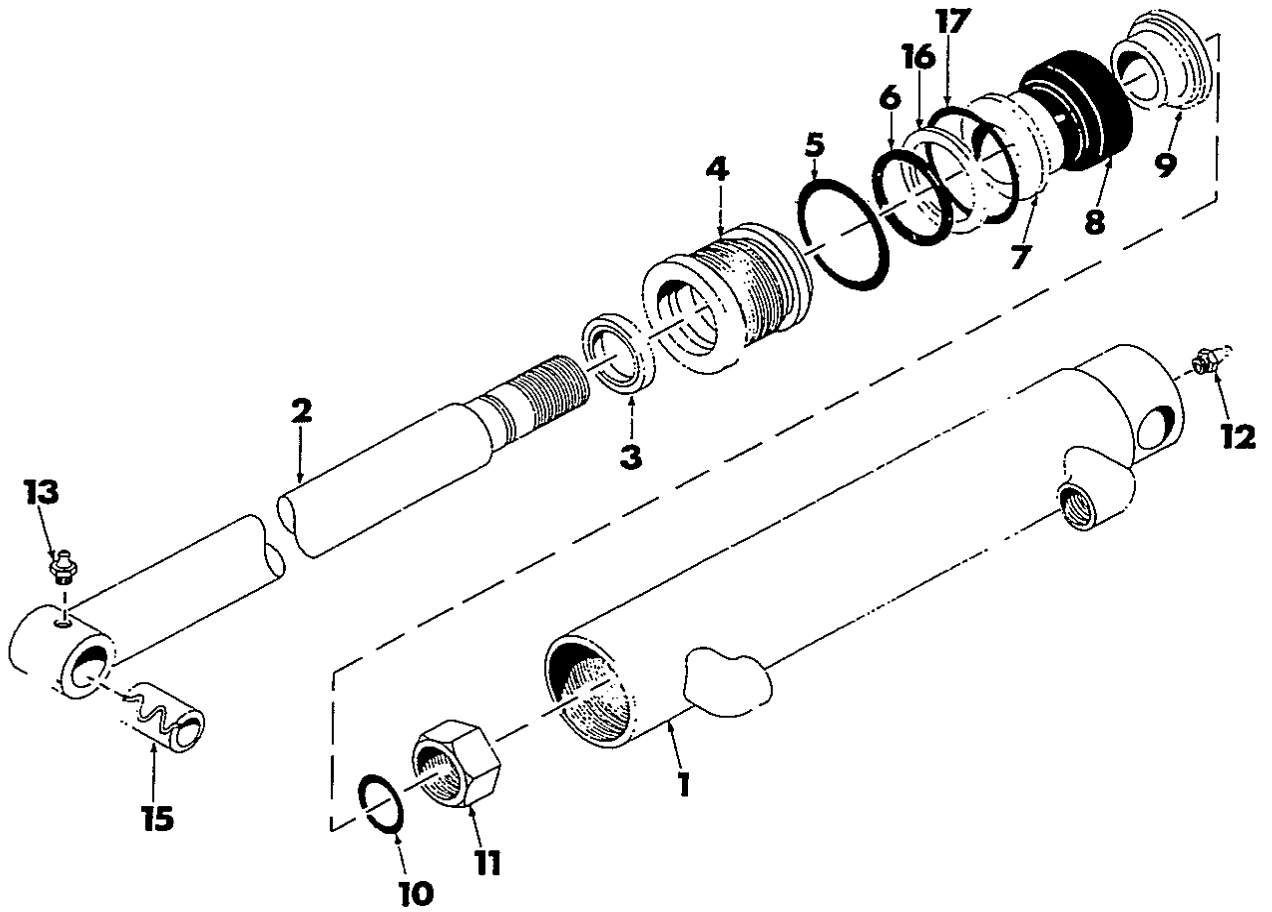
LIFT CYLINDER — T173HL 'S'

4.8

REF. NO.	PART NO.	DESCRIPTION	T173 HL'S'	SERIAL NO.
	37792	Lift Cylinder 2 1/2" x 32" x 45" Stroke	2	
1	1413	Grease Fitting 1/8" NPT x 90°	1	
2	38581	Shaft	1	
3	29875	Complete Seal Kit	1	
4	30013	Spacer	1	
5	29979	Piston Front Section	1	
6	29978	Piston Rear Section	1	
7	6297	Nut	1	
8	38582	Cylinder Barrel	1	
9	29860	Cylinder Head	1	
10	See Item 3	Seal	1	
11	See Item 3	Rod Seal	1	
12	See Item 3	'O' Ring	1	
13	See Item 3	Wear Ring	2	
14	See Item 3	Piston Seal	1	
15	See Item 3	'O' Ring	1	
16	2010	Grease Fitting 1/8" NPT	1	

(OPTIONAL) HEAVY DUTY LIFT CYLINDER — T173HL S

REF. NO.	PART NO.	DESCRIPTION	T173 HL'S'	SERIAL NO.
	37793	Lift Cylinder 3" x 32" x 45"	2	
1	2010	Grease Fitting 1/8" NPT	1	
2	38583	Piston Rod Ass'y.	1	
3	29878	Seal Kit	1	
4	30027	Spacer Tube	1	
5	29861	Piston Part B	1	
6	29862	Piston Part A	1	
7	29896	Hex. Lock Nut	1	
8	38584	Cylinder Barrel	1	
9	30026	Head Plate	1	
10	See Item 3	Seal	1	
11	See Item 3	Rod Seal	1	
12	See Item 3	'O' Ring	1	
13	See Item 3	Wear Ring	1	
14	See Item 3	Piston Seal	1	
15	See Item 3	'O' Ring	1	
16	2010	Grease Fitting 1/8" NPT	1	



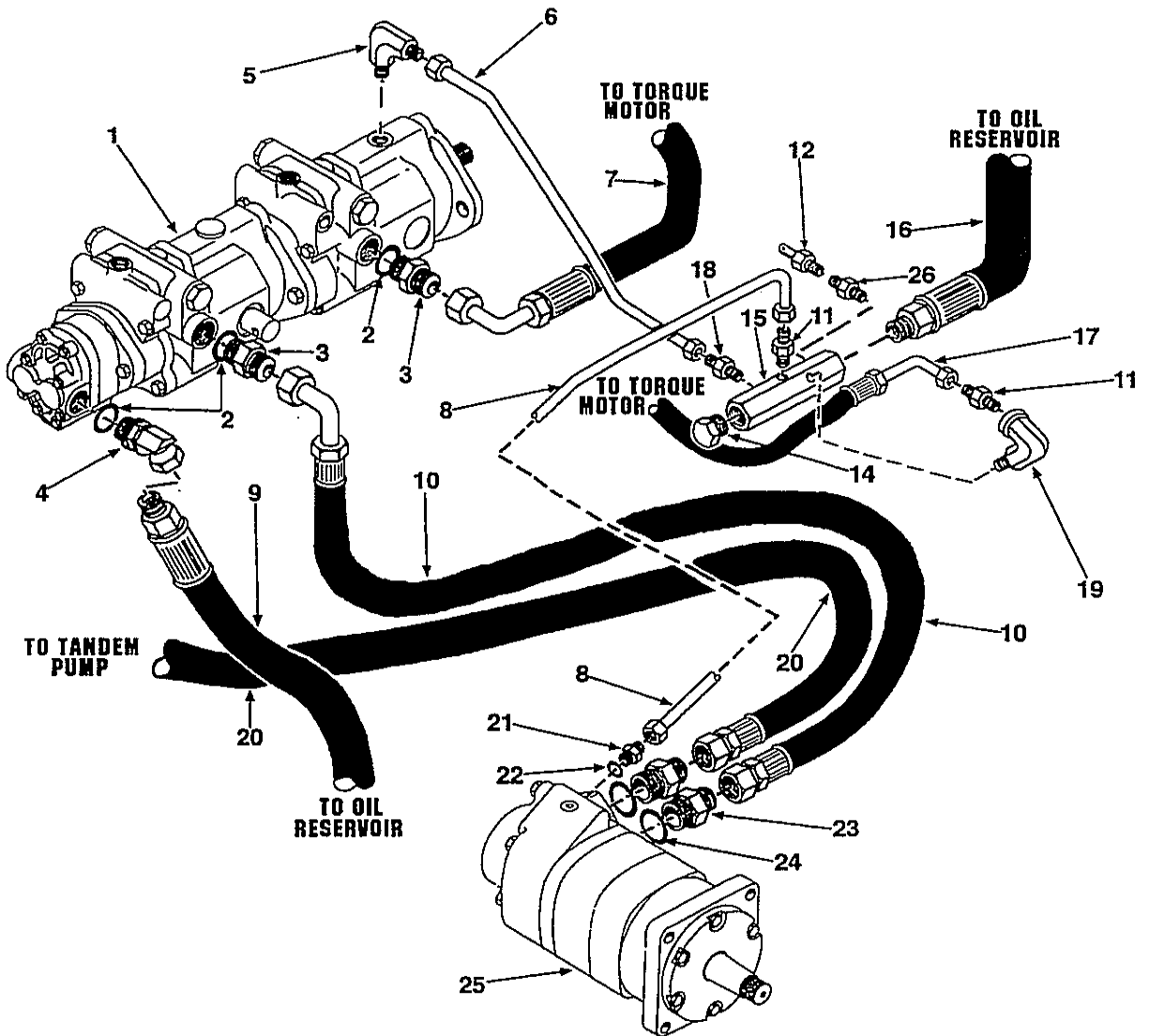
HYDROSTATIC DRIVE SYSTEM 5.

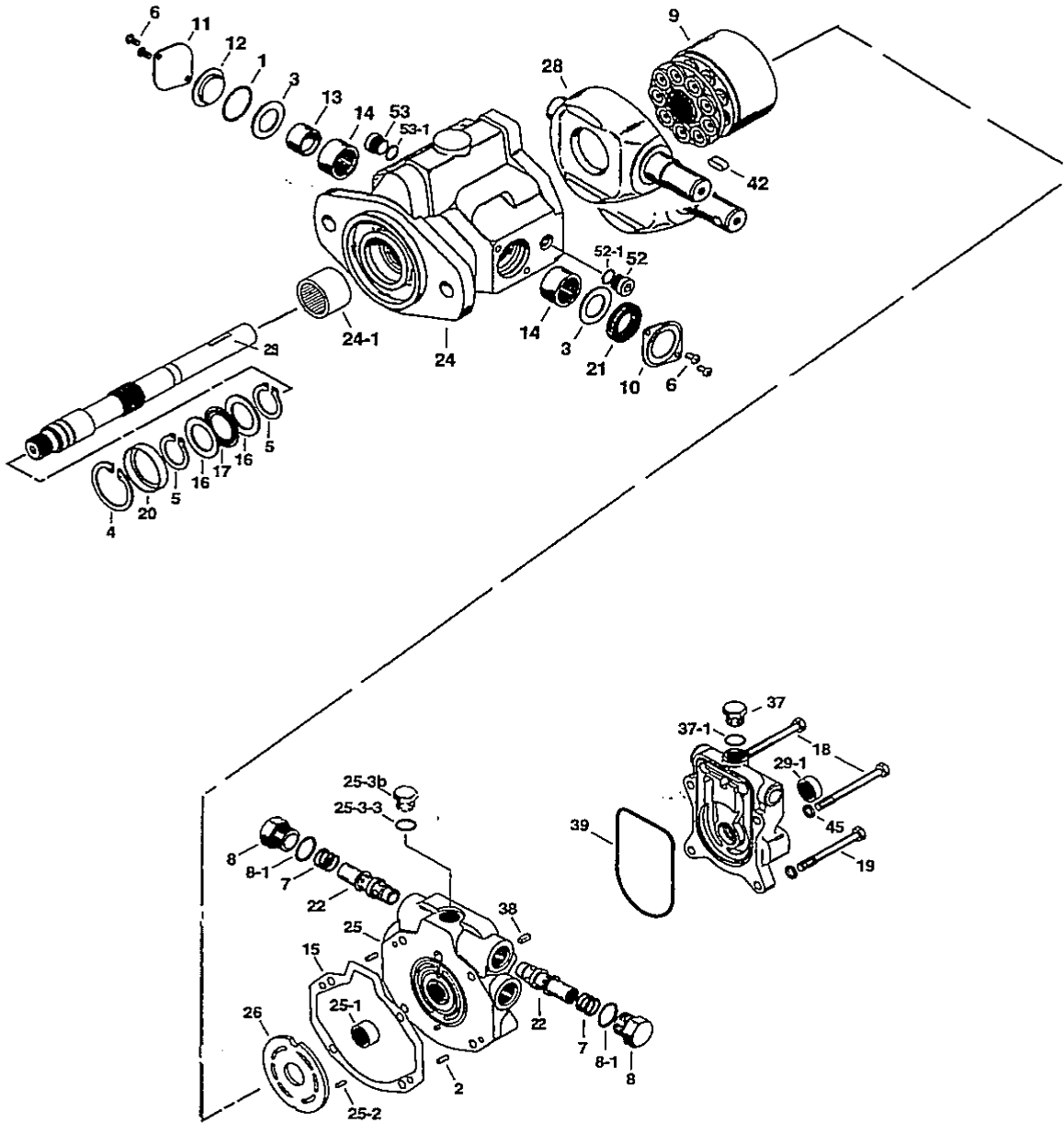
C-4 Hydrostatic Drive Circuit (R.H. Side).....5.1
C-5 Hydrostatic Drive Circuit (L.H. Side)5.1.1
C-6 Front Hydrostatic Pump5.2
C-7 Rear Hydrostatic Pump5.2.1
C-8 Torque Motor.....5.3

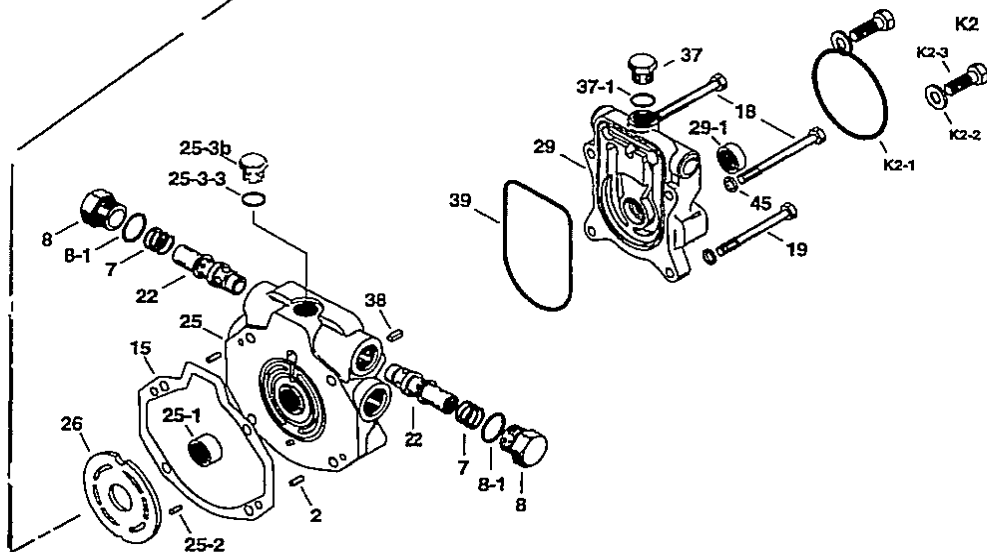
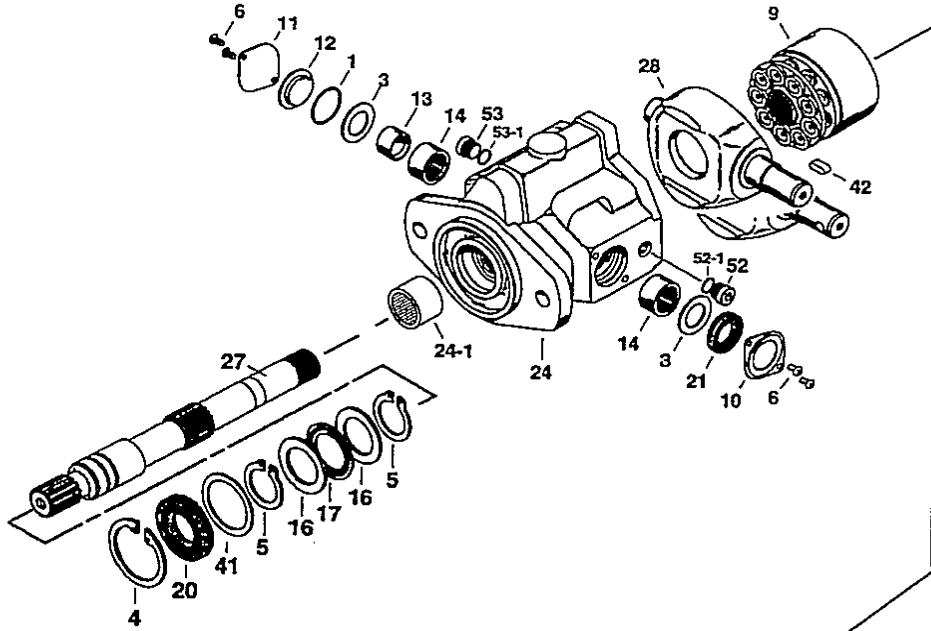
**HYDROSTATIC
DRIVE
SYSTEM**

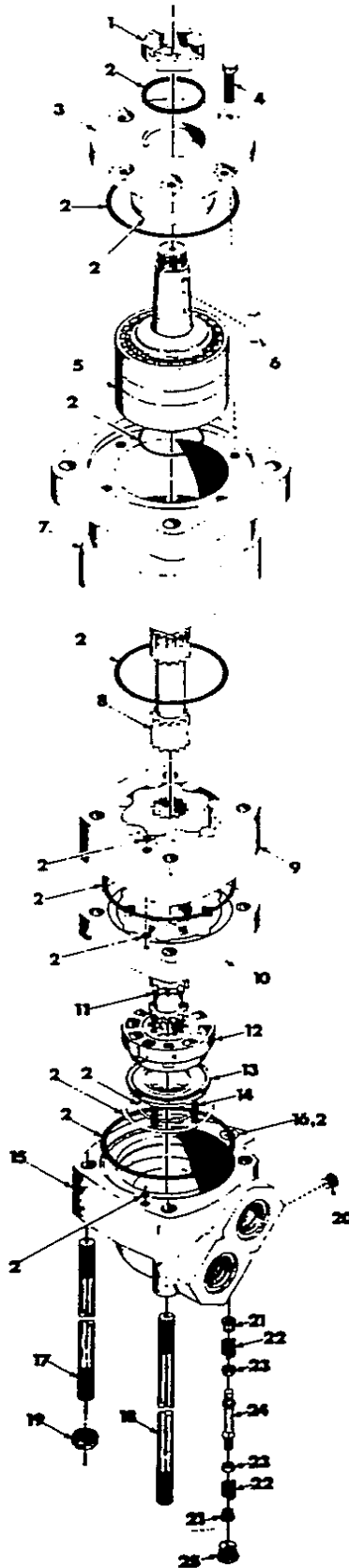


HYDROSTATIC DRIVE CIRCUIT (L.H. SIDE)



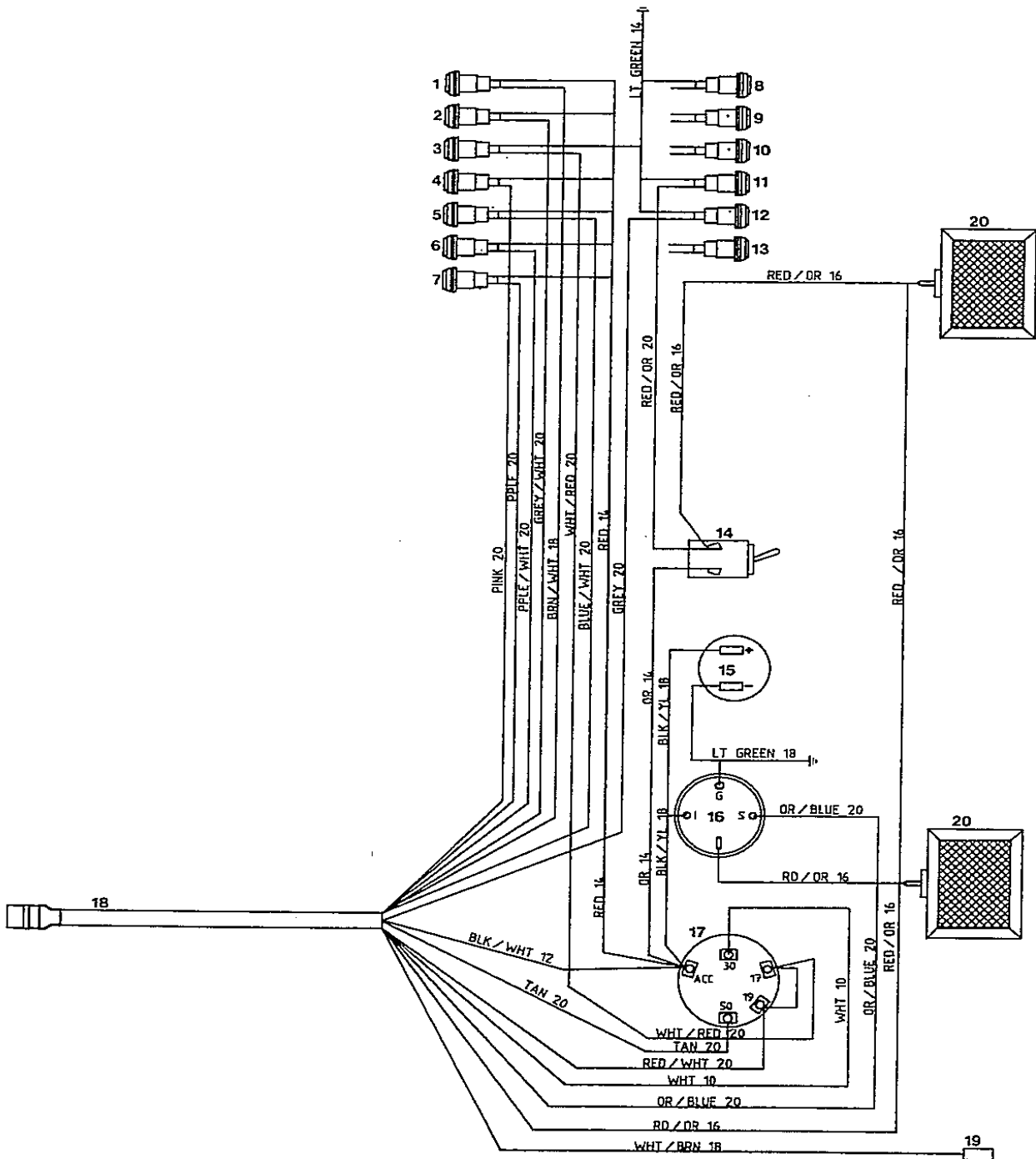


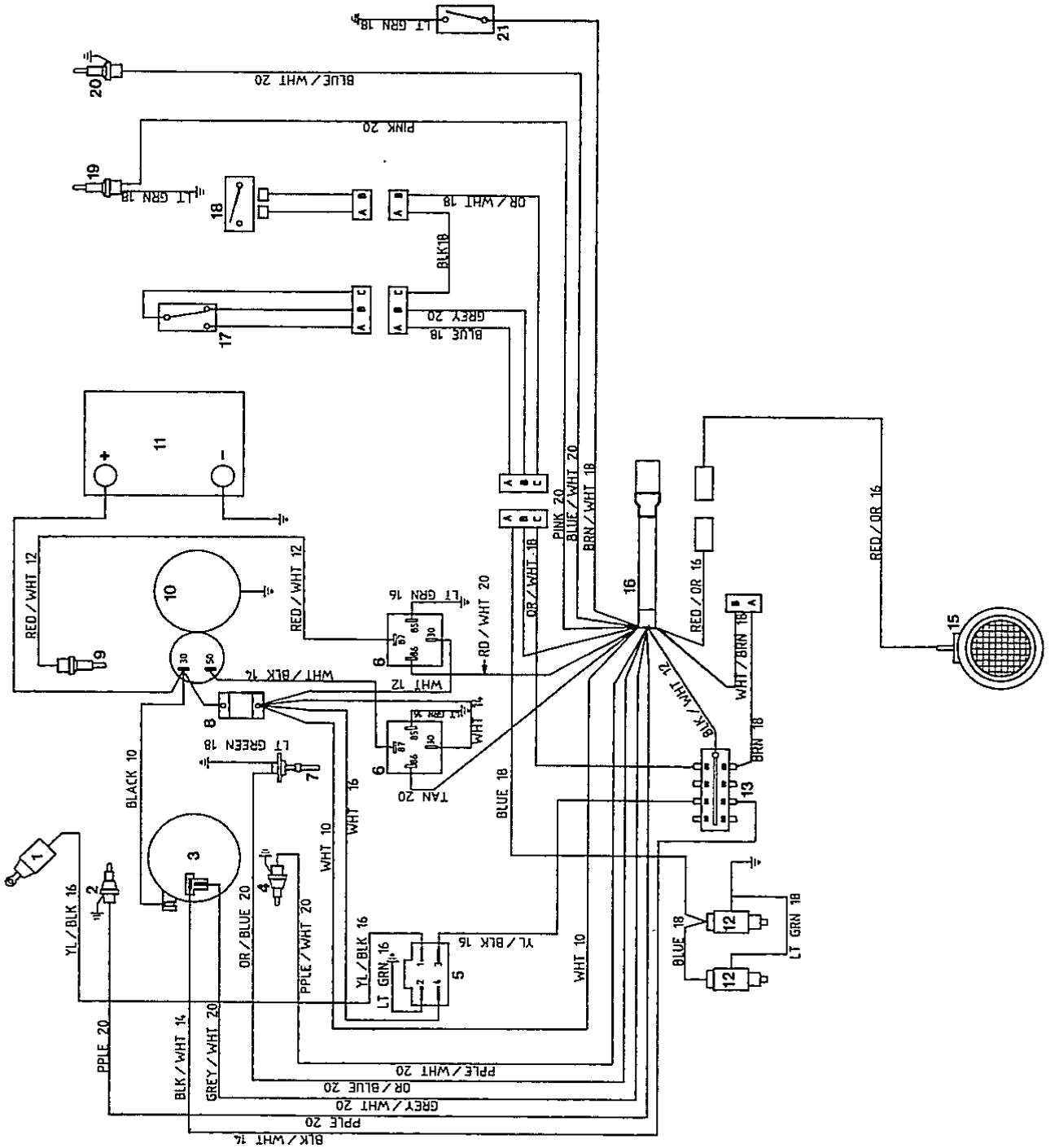




ELECTRICAL SYSTEM 6.	
C-9	Electrical Schematic (ROPS Side) to S/N LK0006676.1
C-10	Electrical Schematic (Engine Side) to S/N LK0006676.2
C-11	Electrical Schematic (ROPS Side) from S/N LK000668-onward6.3
C-12	Electrical Schematic (Engine Side) from S/N LK000668-onward6.4

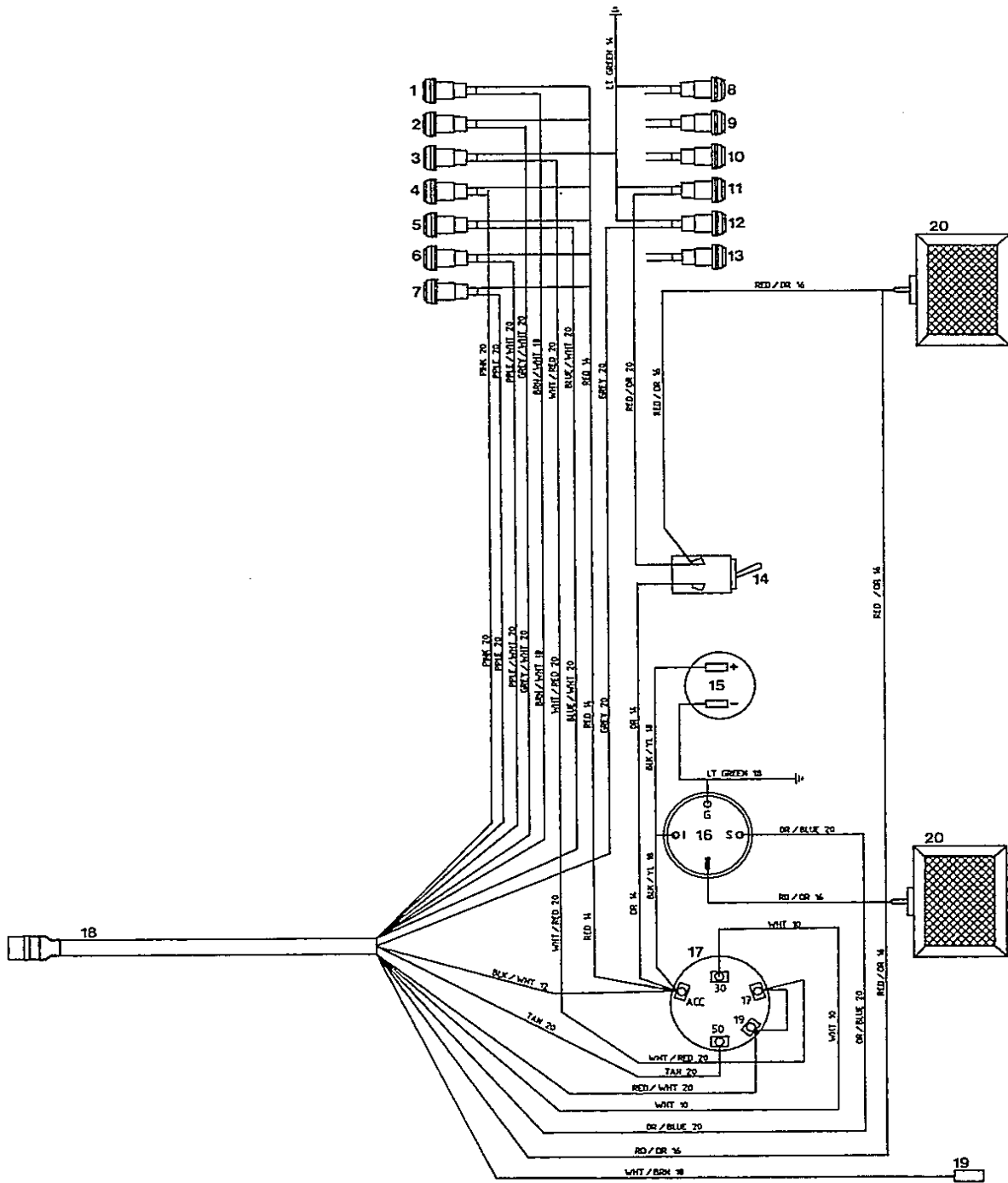
**ELECTRICAL
SYSTEM**

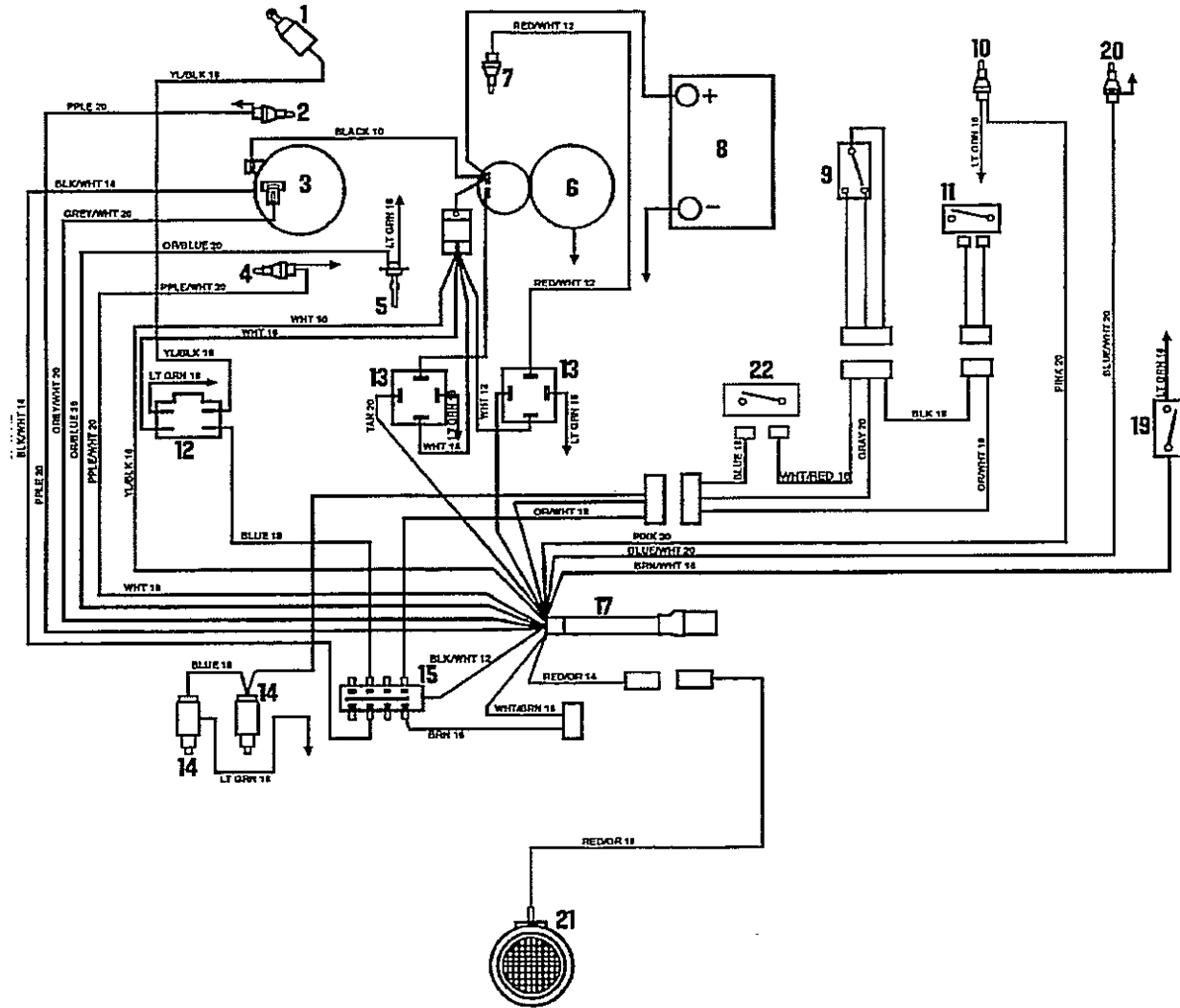






ELECTRICAL SCHEMATIC (ROPS SIDE) FROM S/N LK000668 ONWARD





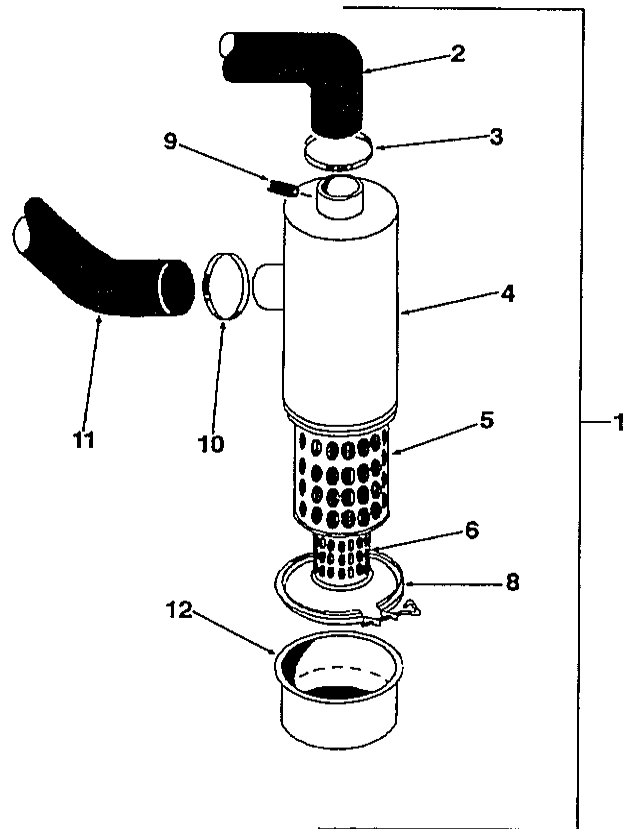
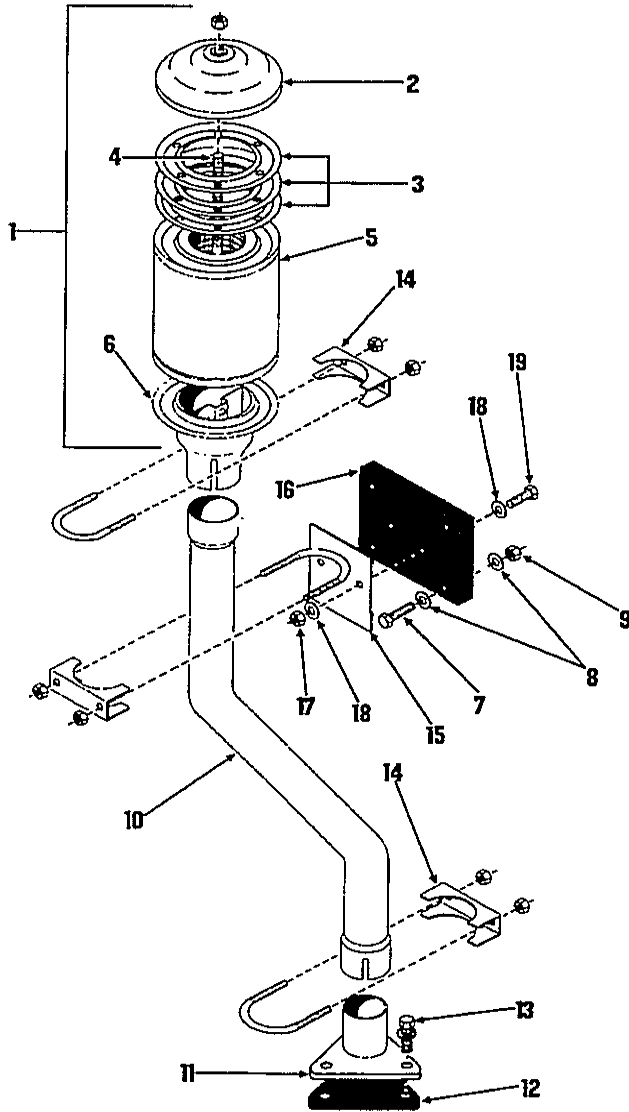
ENGINE EQUIPMENT 7.

D-1	Exhaust System	7.1
D-1	Air Cleaner	7.1
D-2	Radiator and Engine Mounts	7.2
D-3	Universal Joint	7.3



EXHAUST SYSTEM

AIR CLEANER

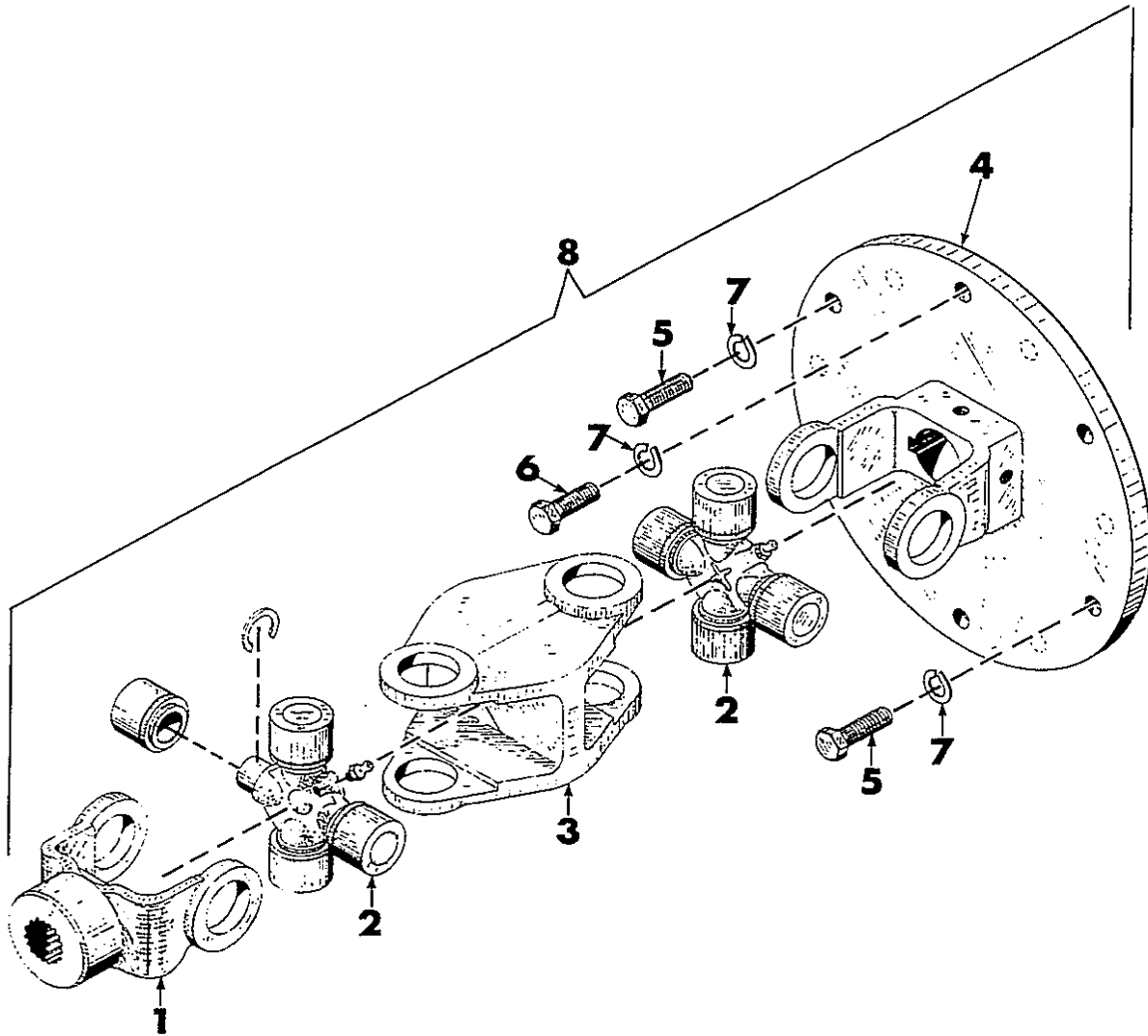


RADIATOR AND ENGINE MOUNTS

7.2

REF. NO.	PART NO.	DESCRIPTION	QUANTITY
1	36021	Radiator Assembly	1
2	19572	Radiator Cap	1
3	18478	Clamp, Top Radiator Hose	1
4	22204	Top Radiator Hose	1
5	NSP		
6	NSP		
7	19586	Gasket Thermostat	1
8	33149	Thermostat Assembly	1
9	38671	Reservoir Overflow	1
10	23771	Bolt M6 x 16	2
11	21320	Washer, Loc. M6	2
12	1650	Washer, Flat 1/4"	2
13	792	Tube, 1/8" I.D., Clear Vinyl	1
*	37980	Cable Ties	2
*	26029	Cable Clip	1
14	024790	Bolt M10 x 25	2
15	21028	Washer, Loc. M10	2
16	1643	Washer, Flat 3/8"	2
17	960646	Brace, Top Radiator Ass'y.	1
18	26029	Clip, Support	1
19	21320	Washer, M6	1
20	23771	Bolt, M6 x 16	1
21	39209	Cap, End Red	1
22	40342	Bar, Emergency Stop Rod	1
23	18481	Pin	2
24	18468	Washer Cushion	2
25	38558	Isolator, Engine	4
26	19574	Bolt	2
27	960774	Mount, L.H. Engine Assembly	1
28	39730	Fan, Pusher	1
29	35568	V-Belt	1
30	39728	Fan, Cover	1
31	11495	Oil Filter	1
32	39684	Filter, Cover	1
33	21677	Fuel Filter	1
34	35772	Hose Water	1
35	35773	Hose Water Btm.	1
36	35774	Hose Water	1
37	960775	Mount, R.H. Engine Assembly	1
38	26859	Bolt M12 x 30	4
39	21558	Washer Loc. 12M	4
40	NSP	Washer Flat	
41	1190	Bolt 5/16" x 1	8
42	38558	Isolator, Engine	4
43	1651	Washer, Flat 5/16"	8
44	1870	Washer 5/16" Flat	8
45	21557	Bolt - Mount to Engine	8
46	21558	Washer Loc. M12	8

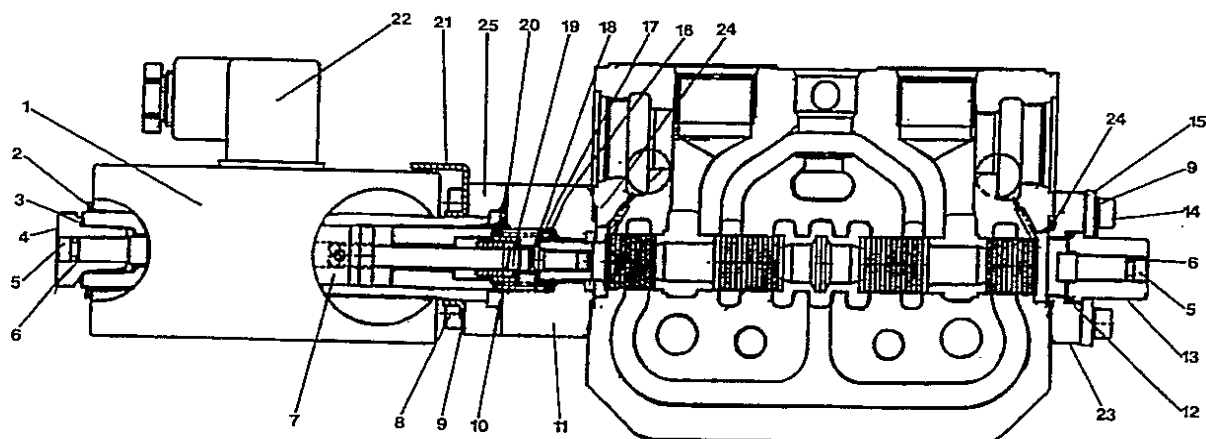
*Not Illustrated

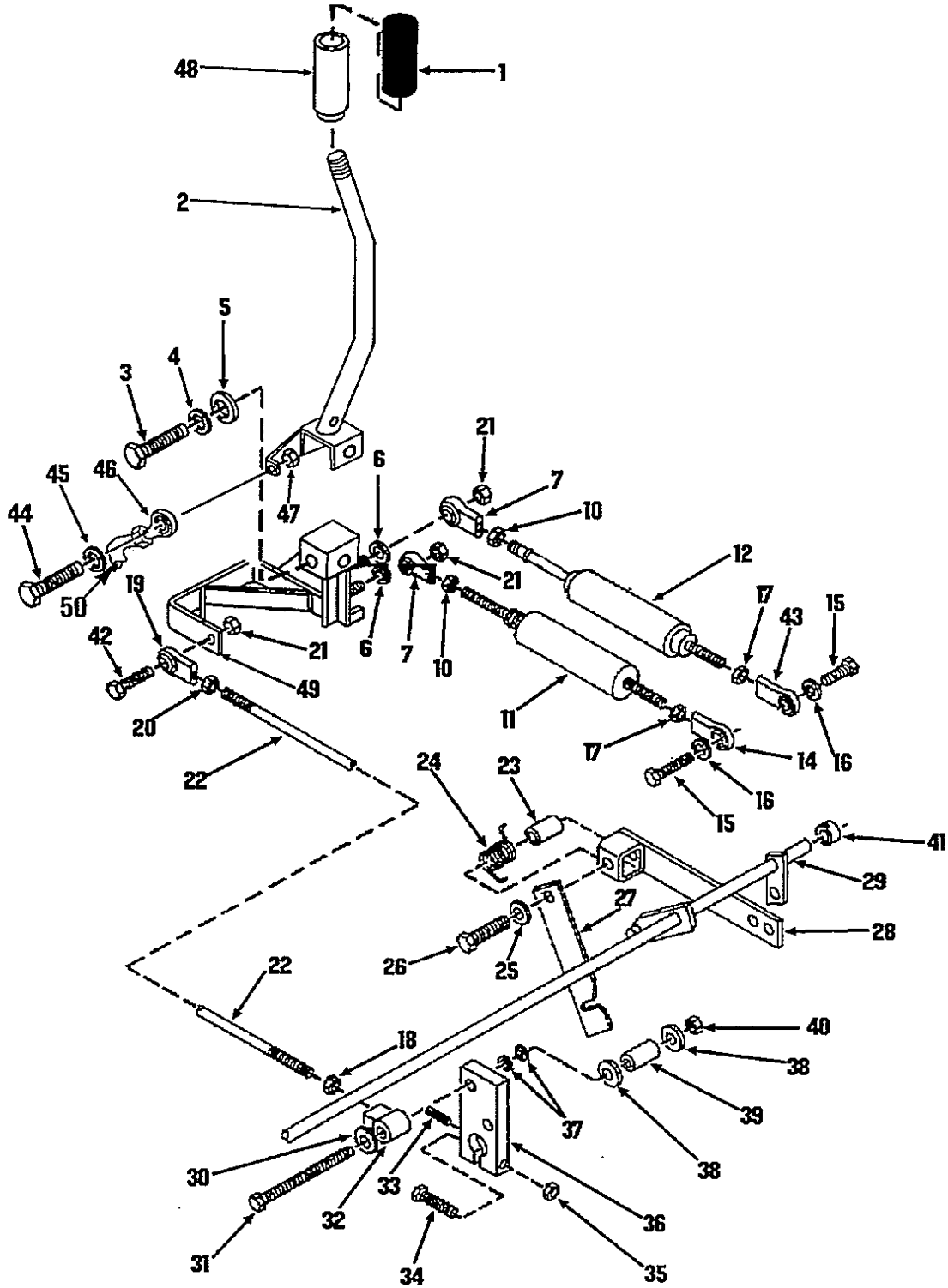


OPTIONAL EQUIPMENT 8.

D-4	Electric Auxiliary	8.1
D-5	Hand Control Lever (R.H. Side)	8.2
D-6	Hand Control Lever (L.H. Side).....	8.3
D-7	Back-Up Alarm	8.4
D-8	Horn Kit.....	8.5
D-9	Wheel Equipment.....	8.6
D-10	Sound Insulation	8.7



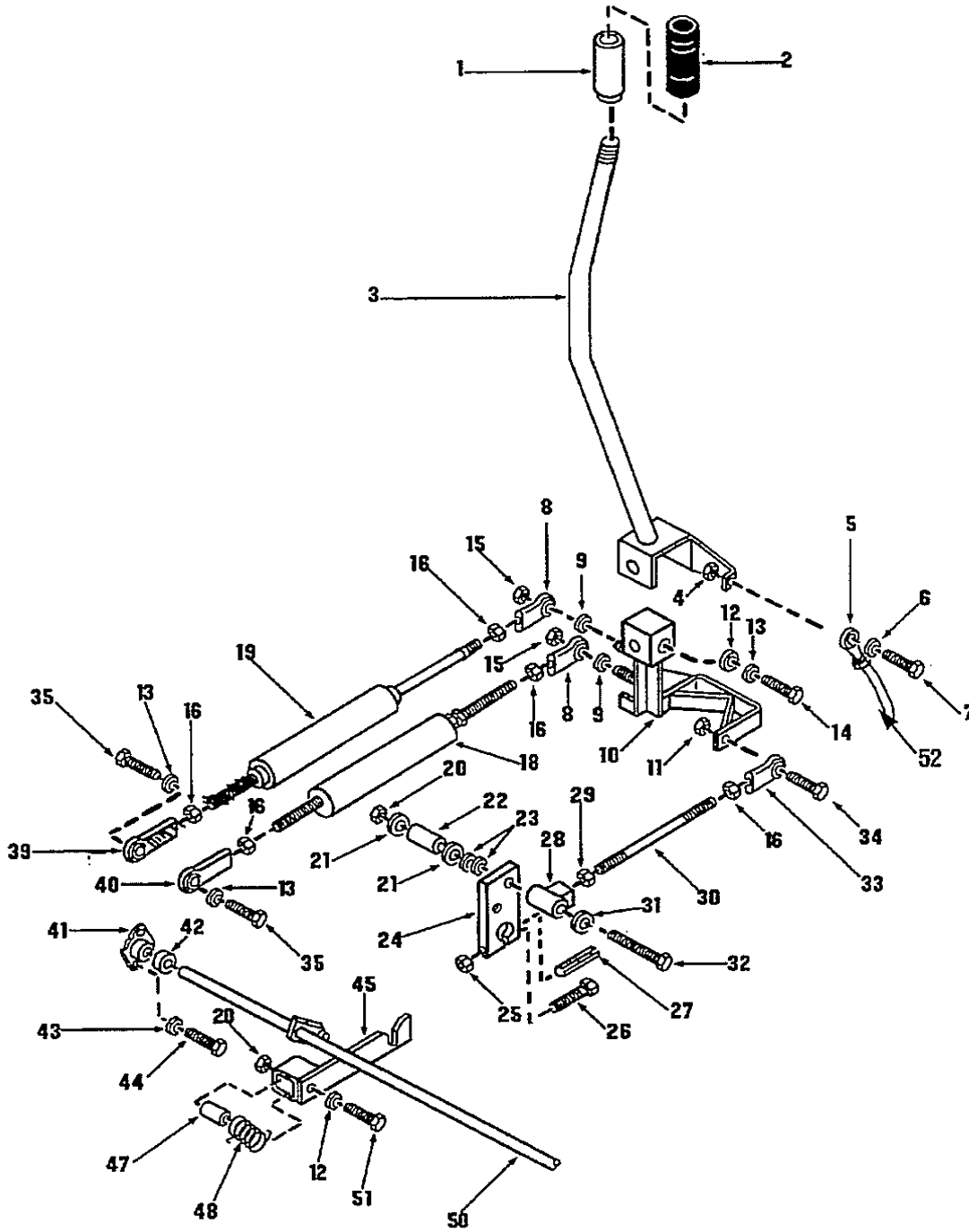




HAND CONTROL LEVER (R.H. SIDE)

8.2

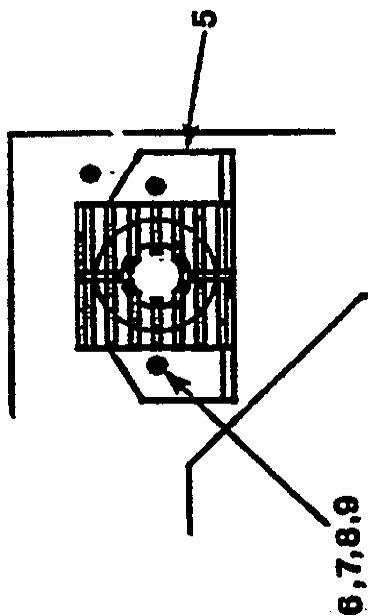
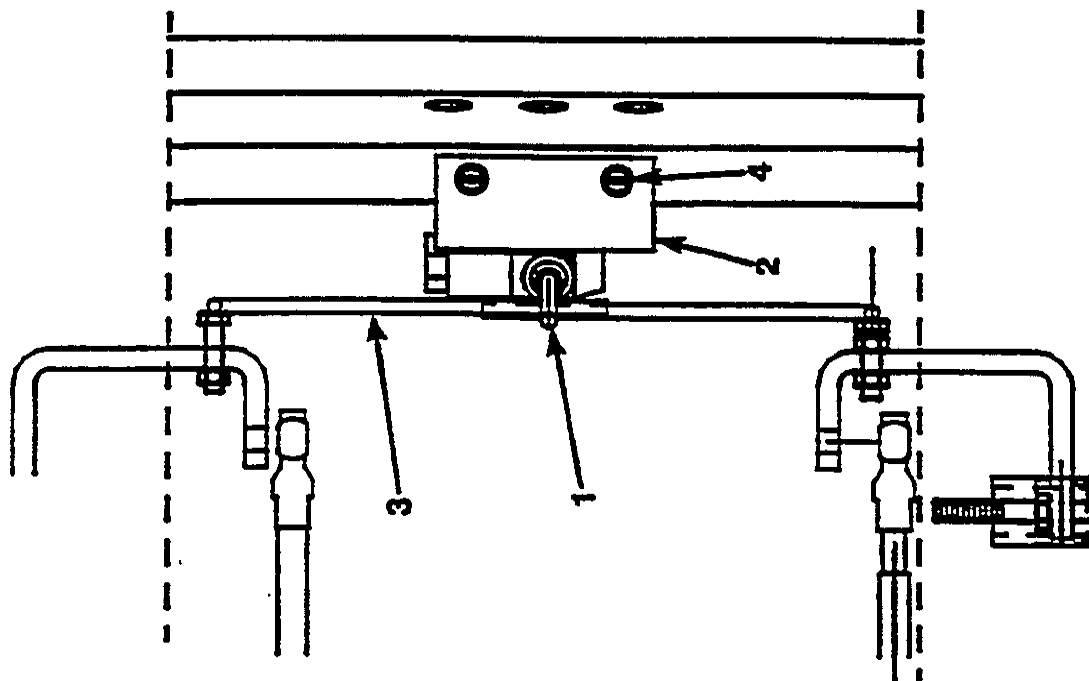
REF. NO.	PART NO.	DESCRIPTION	T173 HL'S'	SERIAL NO.
1	3189	Lever Grip	1	
2	960871	R.H. Hand Control Lever Ass'y.	1	
3	1673	Bolt, Hex. 3/8" x 3/4" UNC Gr. 5	1	
4	1642	Washer, Lock 3/8"	1	
5	1643	Washer, Flat 3/8"	1	
6	21174	Washer, .390 ID x 7 Ga.	2	
7	5803	Rod End Ass'y, .375 Female	2	
10	1898	Nut, Hex. 3/8" UNF	2	
11	14860	Shock Absorber	1	
12	959090	Hydroback Ass'y	1	
14	5803	Rod End Ass'y, .375 Female	2	
15	1193	Bolt, Hex. 3/8" x 1" UNC	2	
16	1642	Washer, Lock 3/8"	2	
17	1898	Nut, Hex. 3/8" UNF	2	
18	35316	Nut, Hex. 3/8" UNF Gr. 5	1	
19	35883	Rod End Ass'y, .250 Female	1	
20	1898	Nut, Hex. 3/8" UNF	1	
21	7465	Nut, Nylok 3/8" UNC	3	
22	40305	R.H. Pintle Linkage Bar	1	
23	23012	Pivot, Bushing	1	
24	956137	Spring, Trsn., .115W Diameter x 1.043	1	
25	1643	Washer, Flat 3/8"	1	
26	14620	Bolt, Hex. 3/8" x 2 3/4" UNC Gr. 5	1	
27	29982	Arm Lock	1	
28	40154	Pintle Lock Pivot, R.H.	1	
29	960840	Pintle Unlock Shaft Ass'y	1	
30	29384	Washer, Fender 3/8" ID x 1 1/2" OD	1	
31	22810	Bolt, Hex. 3/8" x 3 3/4" UNC Gr. 5	1	
32	960402	Rod End, Isolated L.H. Thread	1	
33	14916	Roll Pin 3/8" x 1 1/2" L.	1	
34	3313	Bolt, 1/4" UNC x 2" L.	1	
35	1350	Nut, 1/4" UNC	1	
36	17167	Pintle Lever	1	
37	21174	Washer, .390 ID x 5/8" OD x 7 Ga.	3	
38	29384	Washer, Fender 3/8" ID x 1 1/2" OD	2	
39	29349	Bushing .500 OD x .391 ID x .625	1	
40	7465	Nut, Nylok 3/8" UNC	1	
41	29066	Collar, Set 1/2" Dia.	1	
42	1672	Bolt, Hex. 3/8" x 1 1/2" UNC Gr. 5	1	
43	15880	Rod End Ass'y	1	
44	17421	Bolt, 1/4 x 1 Stainless	2	
45	25583	Washer, Lock Stainless 1/4"	2	
46	35883	Rod End	2	
47	17432	Nut Nylok	1	
48	960878	Lever Handle Ass'y	1	To LK000635
48	961303	Lever Handle Ass'y	1	LK000636-Onward
49	961023	Swivel Ass'y, Hand Control R.H.	1	
50	36305	Cable, Ass'y.	2	



HAND CONTROL LEVER (L.H. SIDE)

8.3

REF. NO.	PART NO.	DESCRIPTION	T173 HL'S'	SERIAL NO.
1	960878	Lever Handle Ass'y	1	To LK000635
1	961303	Lever Handle Ass'y	1	LK000635 - Onward
2	3189	Lever Grip	1	
3	960870	L.H. Hand Control Lever Ass'y	1	
4	17432	Nut, Nylok	1	
5	35883	Rod, End	1	
6	25583	Washer	1	
7	17421	Bolt	1	
8	5803	Rod End Ass'y .250 Female	2	
9	21174	Washer, .390 ID x 5/8" OD x 7 Ga	2	
10	961022	Swivel Ass'y, Hand Control L.H.	1	
11	7465	Nut, Nylok 3/8" UNF	1	
12	1643	Washer, Flat 3/8"	2	
13	1642	Washer, Lock 3/8"	3	
14	1673	Bolt, Hex. 3/8" x 3/4" UNC Gr. 5	1	
15	7465	Nut, Hex. 3/8" UNF	2	
16	1898	Nut, Hex. 3/8" UNF	5	
18	14860	Shock Absorber	1	
19	959090	Hydroback Ass'y	1	
20	7465	Nut, Nylok. 3/8" UNF	2	
21	29384	Washer, Fender 3/8" ID x 1 1/2" OD	2	
22	29349	Bushing, .500 OD x .391 ID x .625	1	
23	21174	Washer, .390 ID x 5/8" OD x 7 Ga	3	
24	17167	Pintle Lever	1	
25	1350	Nut, 1/4" UNC	1	
26	3313	Bolt, 1/4" UNC x 2" L.	1	
27	14916	Roll Pin 3/8" x 1 1/2"	1	
28	960402	Rod End, Isolated, L.H. Thread	1	
29	35316	Nut, Hex. 3/8" UNF, Gr. 5	1	
30	40306	L.H. Pintle Linkage Bar	1	
31	29384	Washer, Fender 3/8" ID x 1 1/2" OD	1	
32	22810	Bolt, Hex. 3/8" x 3 3/4" UNC Gr. 5	1	
33	5803	Rod End Ass'y, .375 Female	1	
34	1672	Bolt, Hex. 3/8" x 1 1/2" UNC Gr. 6	1	
35	1193	Bolt, Hex. 3/8" x 1" UNC	2	
39	15880	Rod End Ass'y	1	
40	5803	Rod End Ass'y, .375 Female	1	
41	29065	Bearing Flange	1	
42	29066	Collar, Set 1/2" Diameter	1	
43	2279	Washer, Lock 1/4"	2	
44	2663	Bolt, Hex. 1/4" x 3/4" UNC Gr. 5	2	
45	40156	Pintle Lock Pivot, L.H.	1	
46	35883	Rod End	2	
47	23016	Pivot Bushing	1	
48	956137	Spring, Trsn. 115W Dia. x 1.043	1	
50	960840	Pintle Unlock Shaft Ass'y	1	
51	14620	Bolt, Hex. 3/8" x 2 3/4" UNC Gr. 5	1	
52	36305	Cable	1	



NUMERICAL INDEX

PART NO.	SECTION	PART NO.	SECTION	PART NO.	SECTION
417	1.2	5170	1.2, 1.4, 1.4.2, 1.6, 2.4	15141	7.3
526	1.2	5237	8.5	15750	1.4.2
617	1.2	5405	2.2	15880	2.1, 2.1.1, 8.2, 8.3
698	4.1	5803	2.1, 2.1.1, 8.2, 8.3	15931	1.4.2
765	8.5	5832	1.4.1, 3.2	16138	7.1
1023	1.4	5842	1.1	16771	1.2, 1.3, 7.1, 8.4
1064	1.6	5893	2.2	16982	1.4.1, 8.6
1190	1.4, 7.2	5897	1.2	16989	1.2
1191	1.4, 2.2, 3.1, 3.2, 4.1	6081	1.4	17167	2.1, 2.1.1, 8.2, 8.3
1193	1.4, 2.1, 2.1.1, 8.2, 8.3	6086	1.4, 1.4.2, 1.5	17340	3.3
1194	1.3, 1.4, 2.3, 3.4	6089	1.1	17372	1.3
1205	3.4	6262	7.1	17378	1.3
1341	3.4	6274	7.1	17379	1.3
1350	1.2, 1.4, 1.4.2, 1.5, 2.1 2.1.1, 8.2, 8.3, 8.4, 8.5	6297	4.8, 4.8.1	17421	8.2, 8.3
1361	1.3	6356	1.5	17432	8.2, 8.3
1364	1.3	6377	3.1	17516	2.2
1387	1.4	6521	8.5	17518	1.5
1413	4.8, 4.8.1	6522	6.1, 6.3, 8.5	17633	3.1
1456	3.1	6526	6.1, 6.3	17940	8.5
1457	4.1	6608	4.4	18318	1.1
1458	1.1	6645	1.2, 1.4.2, 1.6, 2.4, 7.1	18468	7.2
1461	5.1.1	6800	1.4.1	18478	7.2
1464	5.1.1	6804	8.6	18481	7.2
1546	3.3	7019	1.4.1	18724	6.2, 6.3
1630	2.2	7124	4.4	19029	7.3
1634	3.2	7416	2.3	19226	4.2, 4.4
1642	1.2, 1.4, 2.1 2.1.1, 8.2, 8.3	7465	1.3, 1.4, 2.1, 2.1.1, 3.4, 8.2, 8.3	19232	4.2, 4.3, 5.1
1643	1.2, 1.4, 2.1, 2.1.1, 2.3 3.4, 7.2, 8.2, 8.3	7667	4.4	19240	5.1, 5.1.1
1650	1.2, 1.4, 1.4.2, 1.5, 2.3 2.4, 7.1, 7.2, 8.4, 8.5	7723	7.1	19242	5.1.1
1651	1.2, 1.4, 1.4.2, 3.1 3.2, 4.1, 7.1, 7.2	8104	5.1, 5.1.1	19572	7.2
1663	3.4	8153	1.3, 1.4.2	19574	7.2
1671	1.3, 2.3	8280	1.4	19586	7.2
1672	1.3, 2.1, 2.1.1, 8.2, 8.3	8303	5.1, 5.1.1	19605	6.1, 6.3
1673	1.4, 2.1, 8.2, 8.3	8613	2.4, 3.1, 3.3, 3.4	19949	1.1
1803	4.4	8704	3.3	20232	4.1
1870	1.4, 3.1, 3.2, 3.4, 4.1, 7.2	8705	3.3	20235	1.4
1898	2.1, 2.1.1, 8.2, 8.3	8863	5.2, 5.2.1	20384	4.1
2010	1.5, 1.6, 3.4, 4.8, 4.8.1	8864	5.2, 5.2.1	20856	1.4
2279	1.2, 1.4, 1.4.2, 1.6 2.1.1, 8.3, 8.4, 8.5	8871	5.2, 5.2.1	20860	1.2, 1.4
2338	1.6	8872	5.2, 5.2.1	20861	1.4
2580	1.4, 7.1	8873	5.2, 5.2.1	20901	3.1
2593	1.5	9421	1.3	21004	1.6
2663	1.2, 2.1.1, 2.3, 2.4, 8.3, 8.4	10547	1.4.1	21028	7.2
2823	1.2	11495	7.2	21148	7.1
3189	1.2, 2.1, 2.1.1, 8.2, 8.3	14619	8.5	21174	2.1, 2.1.1, 8.2, 8.3
3273	3.4	14620	2.1.1, 8.2, 8.3	21293	7.1
3313	2.1, 2.1.1, 8.2, 8.3	14797	1.1	21294	7.1
3550	1.5	14860	2.1.1, 8.2, 8.3	21295	7.1
4539	1.1	14867	5.1, 5.1.1	21296	7.1
4549	4.1	14877	3.2	21297	7.1
		14898	4.1	21320	2.3, 7.2
		14916	2.1, 2.1.1, 8.2	21557	2.3, 7.2
		14959	5.2, 5.2.1	21558	2.3, 7.2
		14961	5.2, 5.2.1	21559	7.3
		15052	7.3	21677	1.1, 7.2
		15140	7.3	21679	1.1

NUMERICAL INDEX

PART NO.	SECTION	PART NO.	SECTION	PART NO.	SECTION
22071	5.3	25176	1.3	30026	4.8
22072	5.3	25583	8.2, 8.3	30027	4.8
22073	5.3	25618	3.2	30044	2.2
22074	5.3	25760	6.1, 6.3	30211	1.3
22075	5.3	25762	1.4	30311	7.1
22087	5.3	25842	3.4	30470	3.4
22089	5.3	25843	3.4	30471	3.4
22105	5.3	25845	3.1, 3.3	30474	3.4
22106	5.3	25879	3.1	30485	3.4
22107	5.3	26029	7.2	30487	3.4
22108	5.3	26041	3.3	30607	1.4
22109	5.3	26042	3.2	30900	1.3
22110	5.3	26188	1.4.1, 3.2	31044	3.3
22111	5.3	26202	4.1	31045	3.3
22112	5.3	26315	3.2	31046	3.3
22116	5.3	26509	3.2	31262	3.1
22117	5.3	26510	3.2	31341	5.1.1
22119	5.3	26650	5.2, 5.2.1	31381	6.2, 6.4
22120	5.3	26765	3.4, 5.1, 5.1.1, 5.3	31402	3.4
22121	5.3	26859	7.2	31440	1.2
22204	7.2	28957	1.4	31488	1.2
22278	4.3	28979	3.4	31489	1.2
22280	4.3	28982	2.3	31581	1.4
22448	3.2	29029	2.3, 3.2	31583	1.4.1
22470	1.6	29059	1.3	31654	2.3
22576	1.2	29064	1.4.1	31744	1.4, 1.4.2
22581	5.3	29065	2.1.1, 8.3	31787	7.1
22734	3.3	29066	2.1, 2.1.1, 8.2, 8.3	31788	7.1
22810	2.1, 2.1.1, 8.2, 8.3	29093	3.4	32070	1.4
22957	4.7	29211	8.6	32478	4.1
22968	7.1	29282	4.3	32578	3.3
23012	2.1, 8.2	29349	2.1, 2.1.1, 8.2, 8.3	32759	3.3
23016	2.1.1, 8.3	29361	3.2	32906	3.3
23096	2.3	29384	2.1, 2.1.1, 8.2, 8.3	32907	3.3
23166	1.1	29431	4.3	33073	6.2, 6.4
23194	1.1	29432	4.3	33119	7.2
23371	2.3	29433	4.4	33211	7.1
23385	1.4	29434	4.4	33701	1.6
23388	5.1, 5.1.1	29435	4.4	33702	1.6
23579	1.4.1	29436	4.4	33831	4.2, 4.3, 4.4
23582	5.1, 5.1.1	29437	4.4	34434	8.6
23583	5.1	29476	3.4	34435	8.6
23584	5.1, 5.1.1	29477	3.4	34467	5.2, 5.2.1
23747	5.1, 5.1.1	29789	8.6	34468	5.2, 5.2.1
23748	5.1	29860	4.8.1, 4.8	34469	5.2, 5.2.1
23749	5.1	29861	4.8	34470	5.2, 5.2.1
23750	5.1, 5.1.1	29875	4.8, 4.8.1	34471	5.2, 5.2.1
23771	2.3, 7.2	29878	4.5, 4.5.1	34472	5.2, 5.2.1
23772	2.3	29894	5.3	34473	5.2, 5.2.1
23861	1.1	29895	5.3	34474	5.2, 5.2.1
24214	1.1	29896	4.8	34475	5.2, 5.2.1
24264	1.1	29971	6.1, 6.2, 6.4	34476	5.2
24452	5.1.1	29978	4.8, 4.8.1	34478	5.2, 5.2.1
24780	7.2	29979	4.8, 4.8.1	34903	4.1
24914	3.4	29982	8.2	34919	4.1
25104	3.3	30013	4.8	34986	5.2.1

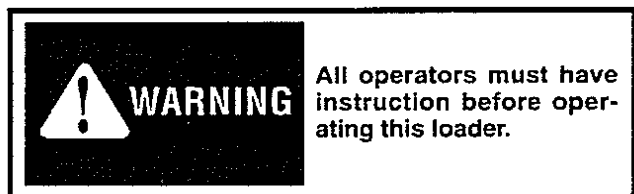
NUMERICAL INDEX

PART NO.	SECTION	PART NO.	SECTION	PART NO.	SECTION
35242	4.7	38058	8.1	38794	6.1
35243	4.7	38059	8.1	38795	6.1
35244	4.7	38060	4.6, 8.1	38796	6.1
35316	2.1.1, 8.2, 8.3	38061	8.1	38800	6.1
35426	1.2	38062	8.2	38801	6.1
35487	1.4.1	38063	8.1	38802	8.4
35536	6.2, 6.4	38065	8.1	38807	2.3
35568	7.2	38066	8.1	38835	8.7
35572	7.2	38067	8.1	38837	8.7
35773	7.2	38068	8.1	38838	8.7
35774	7.2	38283	8.6	38839	8.7
35883	8.2, 8.3	38284	8.6	38840	8.7
36021	7.2	38315	8.6	38841	8.7
36092	8.6	38316	8.6	38842	8.7
36094	8.6	38385	4.2, 4.3, 4.4, 4.6	38843	8.7
36305	2.2, 8.2, 8.3	38393	5.1	38844	8.7
36336	4.2, 4.3	38516	1.4, 6.2, 6.4	38845	8.7
36337	4.4	38517	2.3	38846	8.7
36338	4.2	38518	1.4	38847	8.7
36339	4.2	38531	8.4	38848	8.7
36423	4.7	38550	5.2, 5.2.1	38854	7.1
36340	4.2	38552	2.4	38855	6.2, 6.4, 7.1
36341	4.2	38553	2.4	38860	8.7
36342	4.4	38555	7.1	38861	8.7
36343	4.4	38558	7.2	38862	8.7
36344	4.3	38560	1.4	38863	8.7
36345	4.3	38561	3.1	38864	8.7
36491	8.6	38577	6.1, 6.3	38865	8.7
36619	8.6	38579	4.8.1	38866	8.7
36643	4.6	38580	4.8.1	38867	8.7
36644	4.6	38581	4.8	38868	8.7
36645	4.6	38582	4.8	38870	6.2, 6.4
36646	4.6	38583	4.8	39019	5.1
36647	4.6	38589	4.8.1	39020	5.1.1
36648	4.6	38600	1.4	39021	1.4.2
36649	4.6	38606	1.4.1	39024	8.7
36650	4.6	38611	4.6, 6.2, 6.4	39121	6.3
36651	4.6	38614	4.6	39122	6.3, 8.5
36653	4.6	38615	4.6	39124	6.3
36657	4.6	38616	4.6	39127	8.5
36659	4.6	38617	4.6, 8.1	39128	8.1
36660	8.1	38618	4.6	39131	8.1
36661	4.6	38619	4.6	39132	8.1
36733	4.1	38620	4.6	39133	8.1
36734	1.1	38621	4.6	39134	8.1
37206	6.2, 6.4	38622	4.6	39135	8.1
37220	7.1	38623	4.6	39136	8.1
37222	7.1	38624	4.6	39137	8.1
37595	4.6	38671	7.2	39138	8.1
37653	4.6	38743	4.7	39152	5.2, 5.2.1
37791	4.3, 4.8.1	38751	1.4	39154	5.2, 5.2.1
37792	4.2, 4.8	38752	8.4	39198	1.4.1
37793	4.2, 4.8	38761	6.1, 6.3	39204	8.5
37808	1.4.2	38768	4.1, 4.7	39206	8.5
38056	8.1	38769	6.1, 6.3	39209	2.3, 7.2
38057	8.1	38770	6.2, 6.4	39540	6.2, 6.4

NUMERICAL INDEX

PART NO	SECTION	PART NO	SECTION	PART NO	SECTION
39572	1.4.1	952766	3.1	960798	2.4, 3.4
39667	6.2, 6.4	953578	1.3	960799	1.4
39684	7.2	953603	5.1.1	960805	2.2
39688	6.2, 6.4	953820	1.1	960806	2.2
39728	7.2	954268	7.3	960807	2.2
39730	7.2	954434	3.1, 3.3	960810	2.3
39736	7.1	954503	7.3	960819	8.4
39738	6.2, 6.4	954704	7.1	960840	2.1, 2.1.1, 2.4, 8.2, 8.3
39747	6.2, 6.4	956137	2.1, 2.1.1, 8.2, 8.3	960852	6.1
39787	4.7	956429	3.3	960855	5.1
39788	5.1, 5.1.1	956448	4.7	960857	5.1
39840	6.2, 6.4	956632	1.3	960858	5.1
39850	4.6	956643	1.4.1	960859	7.1
39851	4.6	956659	3.4	960870	8.3
39852	4.6	956660	3.4	960871	8.2
39894	4.6	956792	8.6	960878	8.2, 8.3
39911	4.6	957189	3.2	960896	1.4
39913	4.5	957259	5.1, 5.1.1	960974	2.1.1
39914	4.5	957372	3.2	960975	2.1
39915	4.5	957785	3.2	961022	8.3
39916	4.5	957843	1.3	961023	8.2
39917	4.5	957929	4.1, 4.7		
39918	4.5	957985	1.4.1		
39919	4.5	958674	3.2		
39920	4.5	958720	1.6		
39972	6.1, 6.3	958722	1.6		
39973	6.1	958724	1.6		
39989	5.2	959090	2.1.1, 8.2, 8.3		
39990	5.2	959273	1.2		
39991	5.2.1	959595	8.6		
39992	5.2, 5.2.1	959625	5.1		
39993	5.2.1	959626	4.1, 5.1.1		
39994	5.2	959627	4.7		
39995	5.2.1	959628	5.1.1		
40009	2.4	959629	4.7		
40049	1.2	959630	4.2		
40053	1.4	959631	4.2		
40091	1.4	959632	4.3, 4.4		
40154	8.2	959633	4.3, 4.4		
40156	2.1.1, 8.3	959711	8.6		
40162	1.4.2	959981	1.4.2		
40164	1.4.2	960270	3.1		
40183	1.4	960271	3.1		
40190	2.2	960402	2.1, 2.1.1, 8.2, 8.3		
40305	2.1, 8.2	960497	2.4		
40306	2.1.1, 8.3	960498	2.4		
40320	2.4	960518	8.6		
40324	7.1	960519	8.6		
40331	4.1	960571	2.3		
40337	1.5	960646	7.2		
40342	2.3, 7.2	960740	8.7		
40346	1.4	960772	1.2		
40347	1.4	960774	7.2		
40367	1.5	960775	7.2		
40581	1.4	960782	1.2		
40670	1.1, 6.2, 6.4	960795	2.4		

SAFETY PRECAUTIONS



1. Read the operators manual carefully and familiarize yourself with the operation of all controls, safety equipment and safety precautions before operating this loader.
2. Always fasten seat belt before starting or operating this loader.
3. Do not operate this loader without using seat bar, seat belt and operators guard.
4. Do not operate this loader unless all safety and instruction decals are in place and all safety equipment, shields, are in place and in proper working condition.
5. Do not get off the loader without first, lowering boom arms, stopping engine, engaging parking brake — foot pedal lock — neutral centering device and removing key from ignition.
6. Do not park on an incline. If necessary to park on an incline park across the slope — lower lift arms and ground bucket — engage the parking brake and block the wheels.
7. Do not exceed rated lift capacity of this loader.
8. Do not drive across a slope. Always go up or down a slope with the heavy end of the loader pointing up towards the top of the slope.
9. Do not allow anyone to ride on loader with the operator.
10. Always operate in a well ventilated area. Do not operate in atmosphere with explosive dusts or grasses.
11. Avoid jerky turns, starts or stops. Reduce operating speed on rough ground and slopes.
12. Keep load low — do not travel or turn with boom arms up.
13. Watch for others when operating.
14. Do not add fuel to the loader when the engine is running or is hot. No smoking.
15. Do not get under raised boom unless boom lock is engaged. Always engage boom lock before doing any servicing which requires the boom be up.
16. Do not attempt to repair or tighten any hydraulic hoses or fittings with the engine running and the hydraulic system is under pressure.
17. Replace all missing, illegible, or damaged safety and warning decals.
18. Do not modify or alter or permit anyone to modify or alter this equipment or any of its components.
19. Do not bypass the starter safety switch. Consult your dealer if your safety starter controls are malfunctioning.

SAFETY EQUIPMENT

The loader is equipped with the following safety equipment for your protection. Take care of them and inspect their condition daily.

Safety Belt — Check seat belts for frayed or cut webbing, damaged buckles or loose mounting brackets.

Operator Guard (ROPS) — Check for damage or loose mountings. Never remove protective screens.

Safety Treads / Warning Decals — Keep safety treads clean. Check for missing or damaged decals. Replace worn, damaged or missing safety treads or decals.

Shields — Keep all protective shields in place.

Seat Bar / Parking Brake / Foot Pedal Lock / Neutral Centering Device — Check operation and repair or replace as required.

Boom Locks — Check operation and repair or replace as required.

Quick-Tach Lock — Check operation and repair or replace as required.

Operating Lights — Check operation of all lighting.